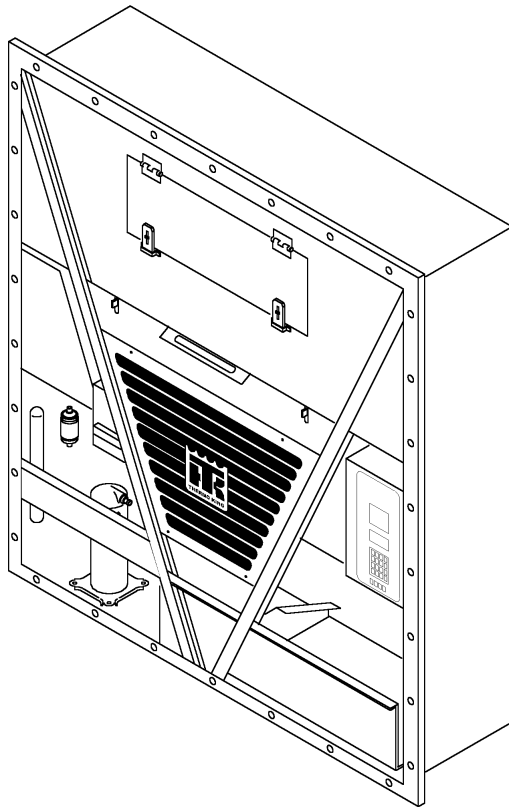


CSR 40 MP3000

TK 50762-0.32



Printed (January 29, 2008)

Copyright © 1999 - Thermo King Corp. - Minneapolis, MN U.S.A.
Electronically printed in U.S.A.

General Information

Tables of Contents

This Parts Manual contains a numerical table of contents listing each assembly name, its associated Grid number and page number. The numerical table of contents is arranged numerically by Grid number. There are references in a parts list referring to other Grid numbers, the numerical table of contents is arranged to facilitate finding the referenced illustrations. At the rear of this parts manual are two indexes, a numerical and alphabetical. The indexes contain all of the part numbers and descriptions which appear in this manual.

Assemblies and Subassemblies

When parts are indented in the description list, they are preceded with a bullet (•). This indicates that the part(s) is available separately or included in an assembly.

GRID NO. 67D6 SWITCH PANEL ASSEMBLY

| REF | PART# | DESCRIPTION | QTY |
|-----|---------|-----------------------|-----|
| | 45-1239 | PANEL - assy, switch | 1 |
| 1 | 99-1960 | • PANEL | 1 |
| | 99-6280 | • • NAMEPLATE - panel | 1 |
| 2 | 33-743 | • GASKET | 1 |

For example: the switch panel nameplate (99-6280) is available separately, available as part of the switch panel (99-1960) and with the panel assembly (45-1239).

ABBREVIATIONS

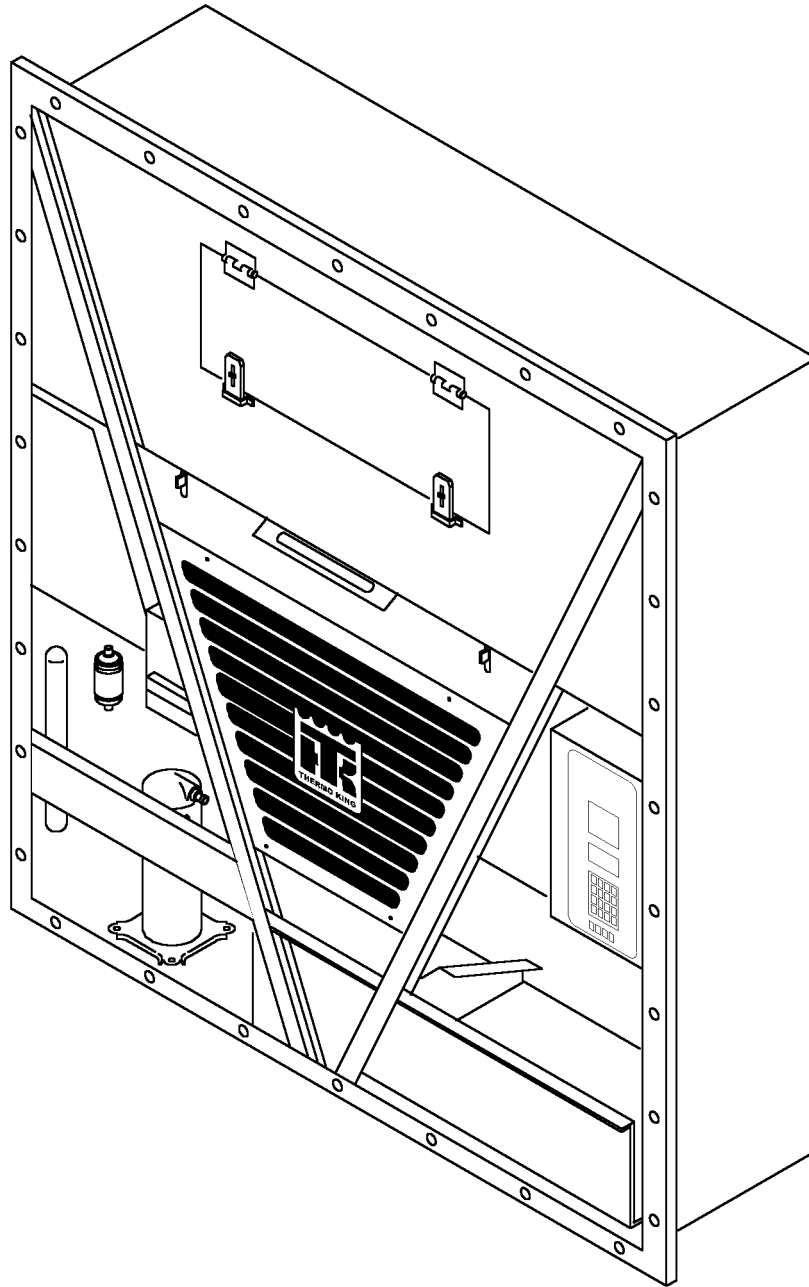
The following abbreviations appear in parts manuals

| | | |
|---|---------------------------------------|--|
| A AC alternating current | E (continued) | O os oversized |
| A/R as required | evap. evaporator | od outside diameter |
| accum accumulator | exch exchanger | P pcb printed circuit board |
| adj adjusting | exp expansion | pkg package |
| al aluminum | ext external | ph phase |
| alt. alternator | F F Fahrenheit | pos positive |
| A or amp ampere | fill fillister | psi pounds per square inch |
| assy assembly | fi fuel injection | |
| B bd board | fl flare | R rad radiator |
| brg bearing | fpt female pipe thread | rcvr receiver |
| brkr breaker | ft feet | ref reference |
| brkt bracket | ftg fitting | reg regulator |
| C C Celsius | H hex hexagon | req required |
| cw clockwise | hh hexagon head | rpm revolutions per minute |
| ccw counter-clockwise | hd head | S sec second |
| cam camshaft | hp horsepower | sld solder |
| compr compressor | hsg housing | soc hd. socket head |
| cond. condenser | I id inside diameter | sol solenoid |
| conn. connecting, connector | in inch (2.54 centimeters) | spl special |
| cyl cylinder | incl includes | sq square |
| D def defrost | inj injection | ss stainless steel |
| deg degree | int internal | std standard |
| dehyd. dehydrator | int th internal tooth | stl steel |
| dia diameter | L liq liquid | suct. suction |
| DC direct current | lg long | sw switch |
| disch discharge | M mm millimeter | T term terminal |
| diff differential | mpt male pipe thread | temp temperature |
| E EMI Extended | mod modulating | thk. thick |
| Maintenance Interval | N neg negative | U us undersize |
| EEC European Economic Community | No. number | V vib vibrasorber |
| eng engine | NS not supplied | W W watt |
| | NSS not sold separately | w/ with |
| | | w/o without |

CSR 40 MP3000

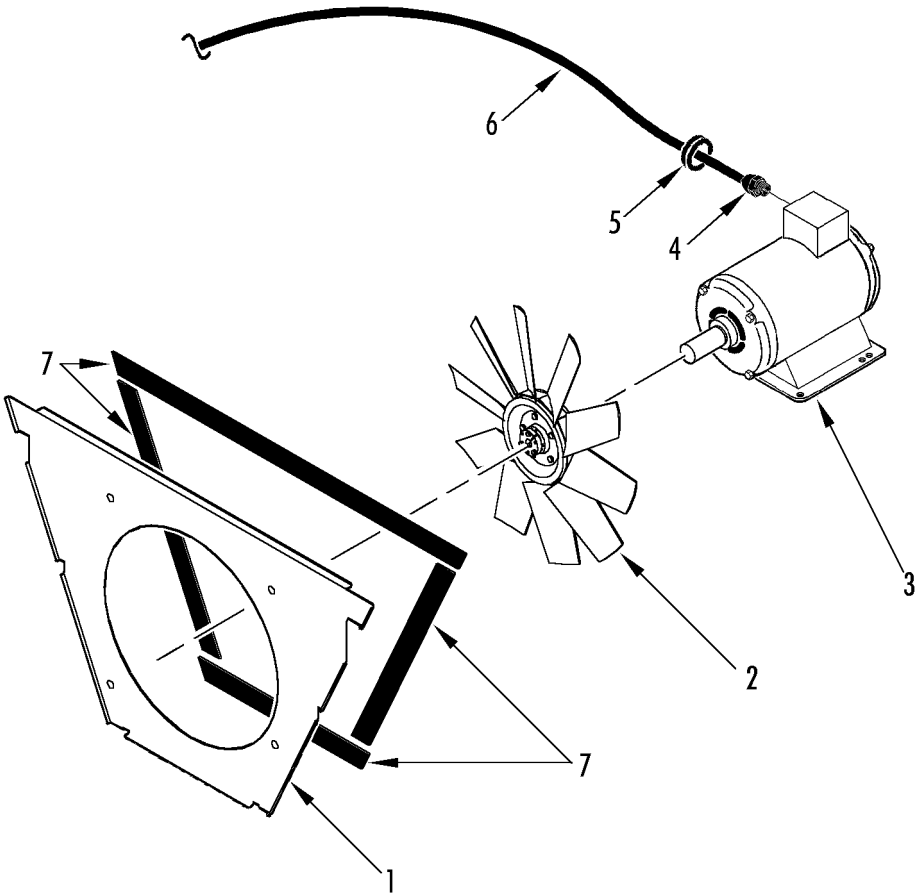
Contents

| Name | Grid | Page |
|--|------------------|-------------|
| CSR 40 MP3000 REFERENCE SHEET | .5U44. | .3 |
| AIR VENT (40 FT CONTAINERS). | .143D7. | .33 |
| DEFROST DRAIN | .143D10. | .37 |
| SENSOR RETAINERS | .147B3. | .31 |
| HUMIDITY CONTROL (OPTION 098033). | .147G12. | .15 |
| EVAPORATOR GROUP (TWO FANS) | .152C1. | .7 |
| CONDENSER FAN | .155D4. | .5 |
| REFRIGERATION (FLANGED COMPRESSOR w/ STEPPER VALVE) | .155D5. | .9 |
| ELECTRICAL COMPONENTS | .155D6. | .17 |
| CONTROL BOX. | .155D7. | .19 |
| HIGH VOLTAGE TRAY | .155D8. | .23 |
| CONTROL BOX DOOR. | .155D9. | .25 |
| FRAME | .155D10. | .27 |
| EVAPORATOR PANELS. | .155D11. | .35 |
| NAMEPLATES. | .155D12. | .39 |
| COMPRESSOR GROUP (w/ SERVICE VALVES) | .155D13. | .13 |



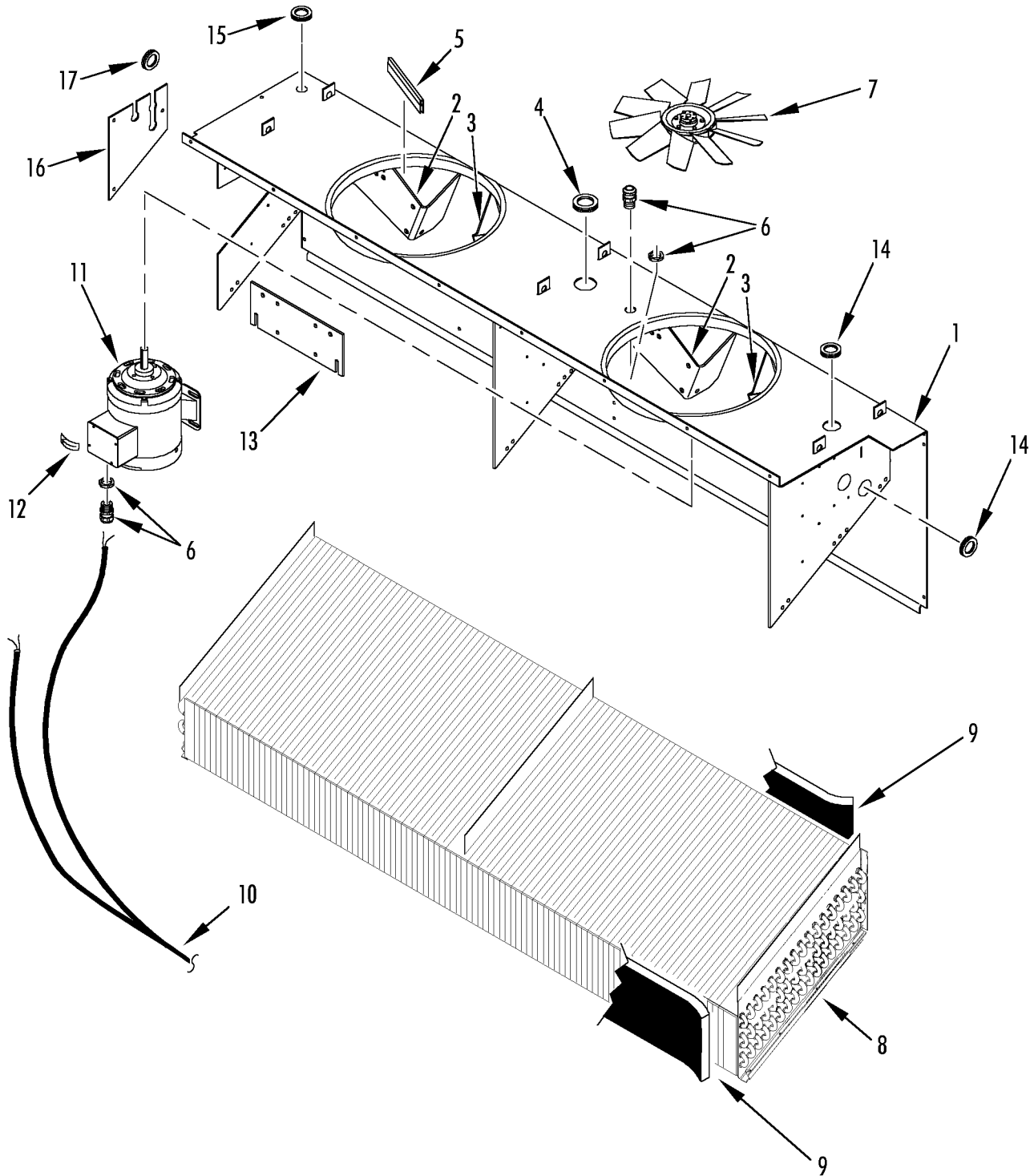


| B/M | DESCRIPTION | Date |
|------------|--------------------|-------------|
| 098912 | CSR40-145 | 11/99 |
| 917145 | CSR40-145 | 11/99 |
| 098105 | Transfresh | 11/99 |
| 098027 | Simpson Lead | 11/99 |
| 098033 | Humidity | 11/99 |



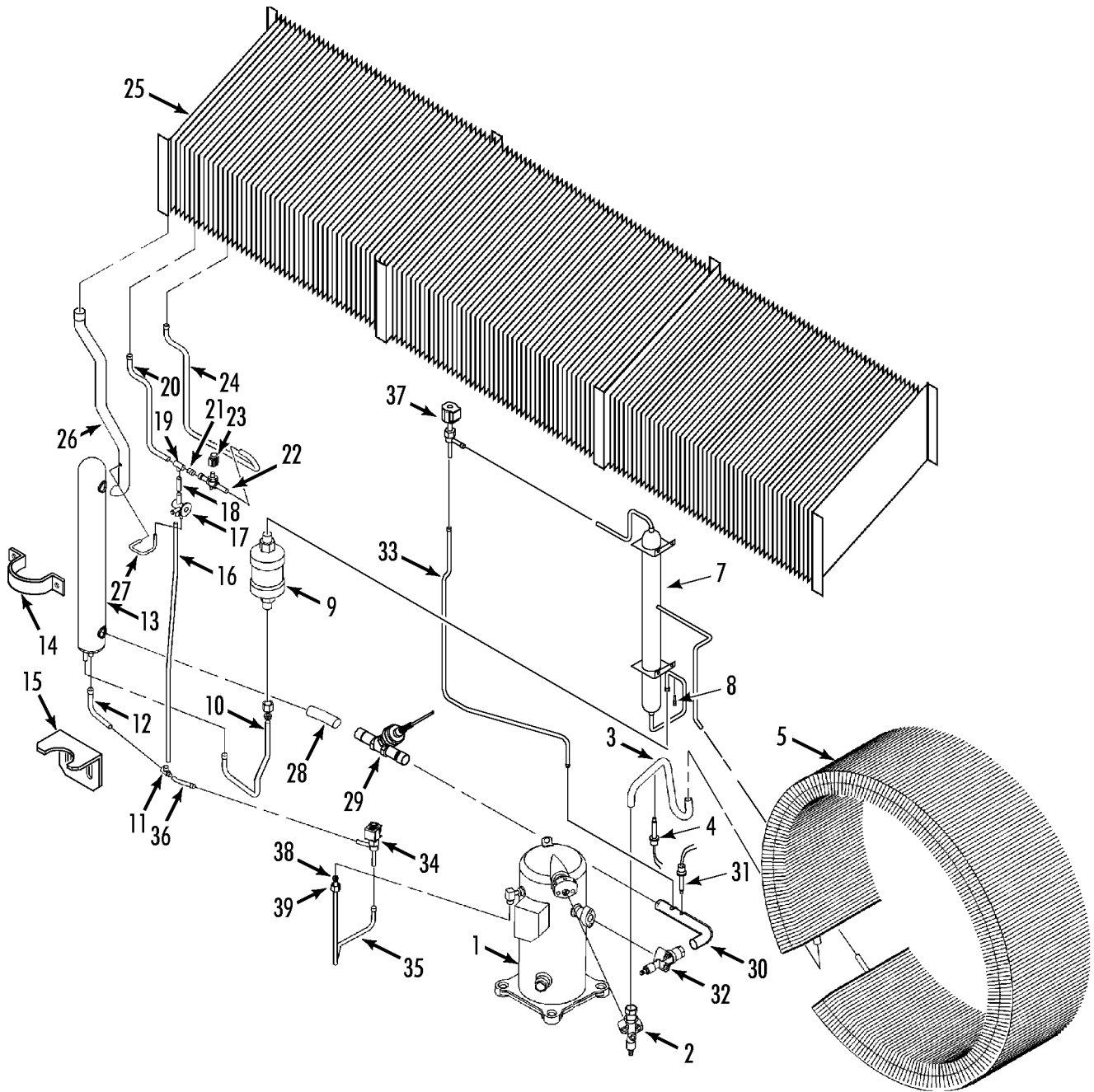


| REF | PART# | DESCRIPTION | QTY |
|-----|---------|-------------------------------------|-----|
| 1 | 91-9912 | ORIFICE - condenser fan | 1 |
| | 55-7035 | SCREW - orifice | 4 |
| | 55-3045 | WASHER - dome | 7 |
| | 55-6997 | NUT - captive | 4 |
| 2 | 78-1173 | FAN - condenser (clockwise) | 1 |
| | 78-1197 | FAN - condenser (counter clockwise) | 1 |
| | 55-8137 | SCREW - fan to hub | 2 |
| | 55-6988 | FLATWASHER | 2 |
| | 55-7066 | LOCKWASHER | 2 |
| 3 | 104-689 | MOTOR - condenser fan | 1 |
| | 77-1498 | • BEARING - shaft end | 1 |
| | 77-1401 | • BEARING - opposite end | 1 |
| | 55-8559 | SCREW - motor | 4 |
| | 55-6988 | FLATWASHER | 8 |
| | 55-7342 | LOCKWASHER | 4 |
| | 55-7339 | NUT | 4 |
| 4 | 55-5900 | GRIP - cable | 1 |
| | 55-8908 | LOCKNUT | 1 |
| 5 | 33-367 | GROMMET | 1 |
| 6 | 41-2953 | HARNESS - condenser fan | 1 |
| | 44-8340 | TERMINAL - splice | 9 |
| 7 | 33-3044 | STRIP - sealing | A/R |





| REF | PART# | DESCRIPTION | QTY |
|-----|---------|---|-----|
| 1 | 98-5475 | HOUSING - evaporator (CRR 119) | 1 |
| | 98-5918 | HOUSING - evaporator (800 & 800A) | 1 |
| | 98-5919 | HOUSING - evaporator (800B) | 1 |
| | 98-5768 | HOUSING - evaporator (CRR 40-300) | 1 |
| | 98-6213 | HOUSING - evaporator (CRR 40-303 & 800D) | 1 |
| | 98-6657 | HOUSING - evaporator (800E & CRR40) | 1 |
| 2 | 92-2331 | • BRACKET - left | 2 |
| | 92-2779 | • BRACKET - left (800E & CRR40) | 2 |
| 3 | 92-2332 | • BRACKET - right | 2 |
| | 55-9162 | RIVET - shroud | 10 |
| 4 | 33-3215 | GROMMET (47 mm) | 1 |
| 5 | 33-3044 | TRIM - edge guard | A/R |
| 6 | 55-5900 | CONNECTOR - harness & sensor | 3 |
| 7 | 78-1117 | FAN - evaporator (14 in, 355 mm dia) | 2 |
| 8 | 67-1558 | COIL - evaporator | 1 |
| | 67-1923 | COIL - evaporator (800E & CRR40) | 1 |
| | 55-8891 | SCREW - coil | 9 |
| | 55-9217 | CAP - tube | 3 |
| 9 | 91-9328 | BLOCK - coil | 2 |
| 10 | 41-3277 | HARNESS - fan & heater (800 & 800A) | 1 |
| | 41-3685 | HARNESS - fan (CRR 40-300, units w/o heater door) | 1 |
| | 41-4018 | HARNESS - evap fan (800B & CRR40) | 1 |
| 11 | 104-758 | MOTOR - fan | 2 |
| | 77-1498 | • BEARING - shaft end | 1 |
| | 77-1401 | • BEARING - opposite end | 1 |
| | 55-6993 | SCREW - motor | 8 |
| | 55-7066 | LOCKWASHER (external tooth) | 2 |
| | 55-7342 | LOCKWASHER | 6 |
| | 55-7085 | FLATWASHER | 8 |
| 12 | 99-4931 | NAMEPLATE - arrow | 1 |
| 13 | 91-8466 | BRACKET - motor | 2 |
| | 55-8903 | SCREW - bracket | 8 |
| | 55-8904 | FLATWASHER | 16 |
| | 55-7342 | LOCKWASHER | 8 |
| | 55-7339 | NUT | 8 |
| 14 | 33-2946 | GROMMET (37 mm) | 5 |
| 15 | 33-3838 | GROMMET (22 mm) | 2 |
| 16 | 92-2775 | COVER - tube | 1 |
| | 55-7172 | SCREW - cover | 3 |
| | 55-7075 | FLATWASHER | 3 |
| 17 | 33-367 | GROMMET (0.625 id) | 3 |

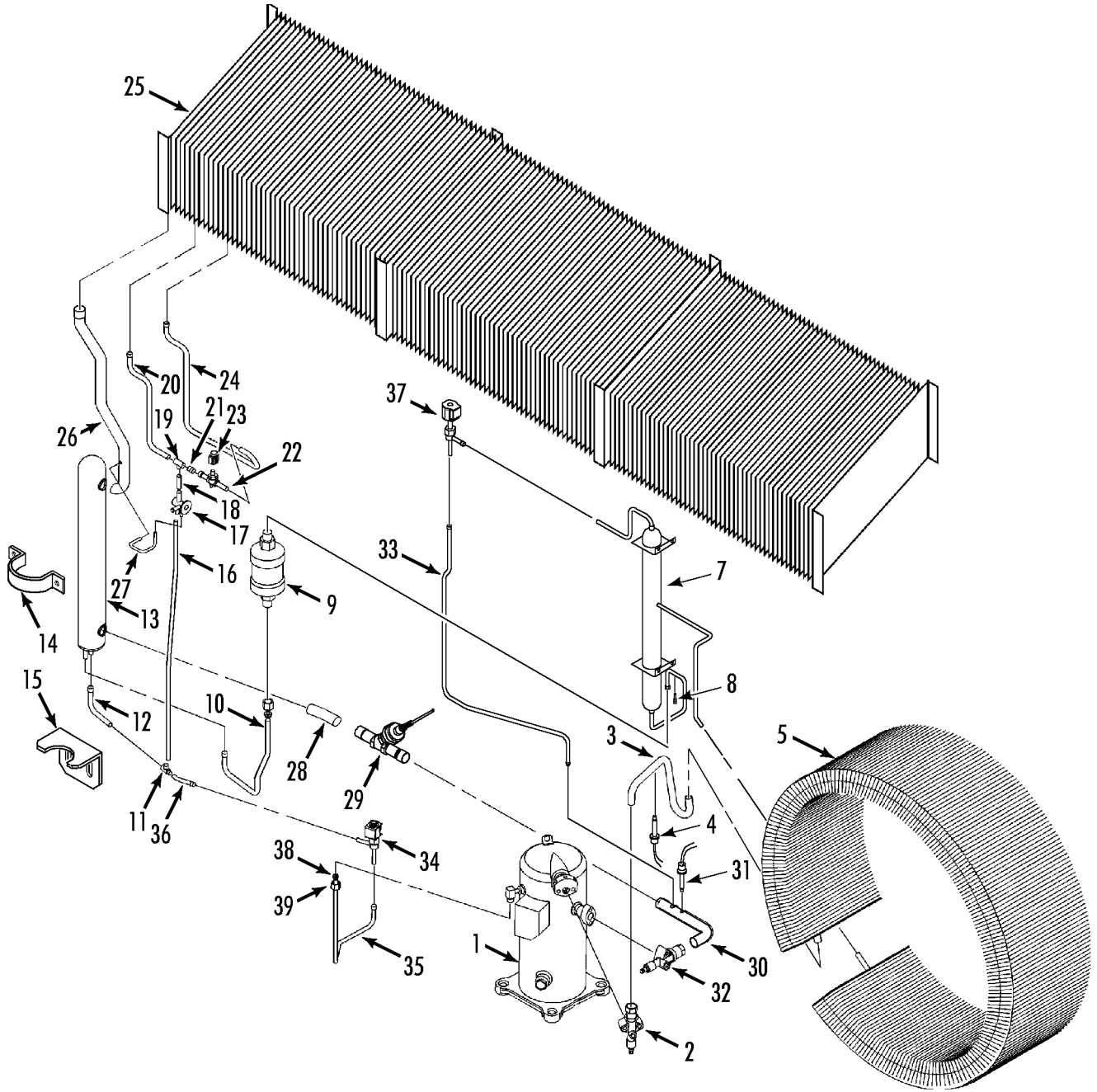


**REFRIGERATION (FLANGED COMPRESSOR w/
STEPPER VALVE)**



155D5

| REF | PART# | DESCRIPTION | QTY |
|-----|----------|--|-----|
| 1 | 102-796 | COMPRESSOR - scroll (see 152A4) | 1 |
| 2 | 66-3942 | VALVE - discharge | 1 |
| 3 | 66-9930 | TUBE - discharge | 1 |
| 4 | 41-3394 | SWITCH - hpco | 1 |
| 5 | 60-285 | COIL - condenser (see 147B4) | 1 |
| | 33-2949 | GASKET (15 mm x 25 mm, pvc) | A/R |
| | 33-2950 | GASKET (10 mm x 15 mm, pvc) | A/R |
| | 55-6994 | SCREW - coil | 7 |
| | 55-7075 | FLATWASHER | 7 |
| | 55-9054 | WASHER (nylon) | 7 |
| 6 | Not Used | | |
| 7 | 67-1792 | TANK - receiver | 1 |
| | 55-6994 | SCREW - receiver | 4 |
| | 55-7075 | FLATWASHER | 8 |
| | 55-9207 | WASHER (nylon) | 4 |
| | 55-7042 | NUT | 4 |
| 8 | 66-9428 | VALVE - relief | 1 |
| 9 | 66-9307 | DEHYDRATOR (o-ring seal) | 1 |
| | 33-3007 | GASKET | 2 |
| | 55-4390 | HANGER - dehydrator | 1 |
| 10 | 66-9931 | TUBE - filter to drier | 1 |
| 11 | 55-3251 | TEE | 1 |
| 12 | 66-9932 | TUBE - exchanger to tee | 1 |
| 13 | 67-1028 | HEAT EXCHANGER | 1 |
| 14 | 91-8468 | CLAMP - exchanger | 1 |
| 15 | 91-8469 | BRACKET - exchanger | 1 |
| | 55-7172 | SCREW - bracket | 2 |
| | 55-7075 | FLATWASHER | 2 |
| 16 | 66-9024 | TUBE - tee to expansion valve | 1 |
| 17 | 61-443 | VALVE - expansion | 1 |
| 18 | 66-9034 | TUBE - expansion valve to tee | 1 |
| 19 | 55-2296 | TEE | 1 |
| 20 | 66-9030 | TUBE - tee to evaporator | 1 |
| 21 | 66-9035 | TUBE - liquid | 1 |
| 22 | 66-9032 | VALVE - solenoid (dehumidity) | 1 |
| 23 | 41-3301 | COIL - valve | 1 |
| 24 | 66-9029 | TUBE - valve to evaporator | 1 |
| 25 | 67-1558 | COIL - evaporator (units w/ 2 evap fans) | 1 |
| | 67-1614 | COIL - evaporator (CSR 20SL, w/ 3 evaporator fans) | 1 |
| | 55-6993 | SCREW (25 mm) | 8 |
| | 55-9541 | FLATWASHER (ins 8.4 mm) | 14 |
| | 55-6988 | FLATWASHER (8.4 mm id) | 14 |



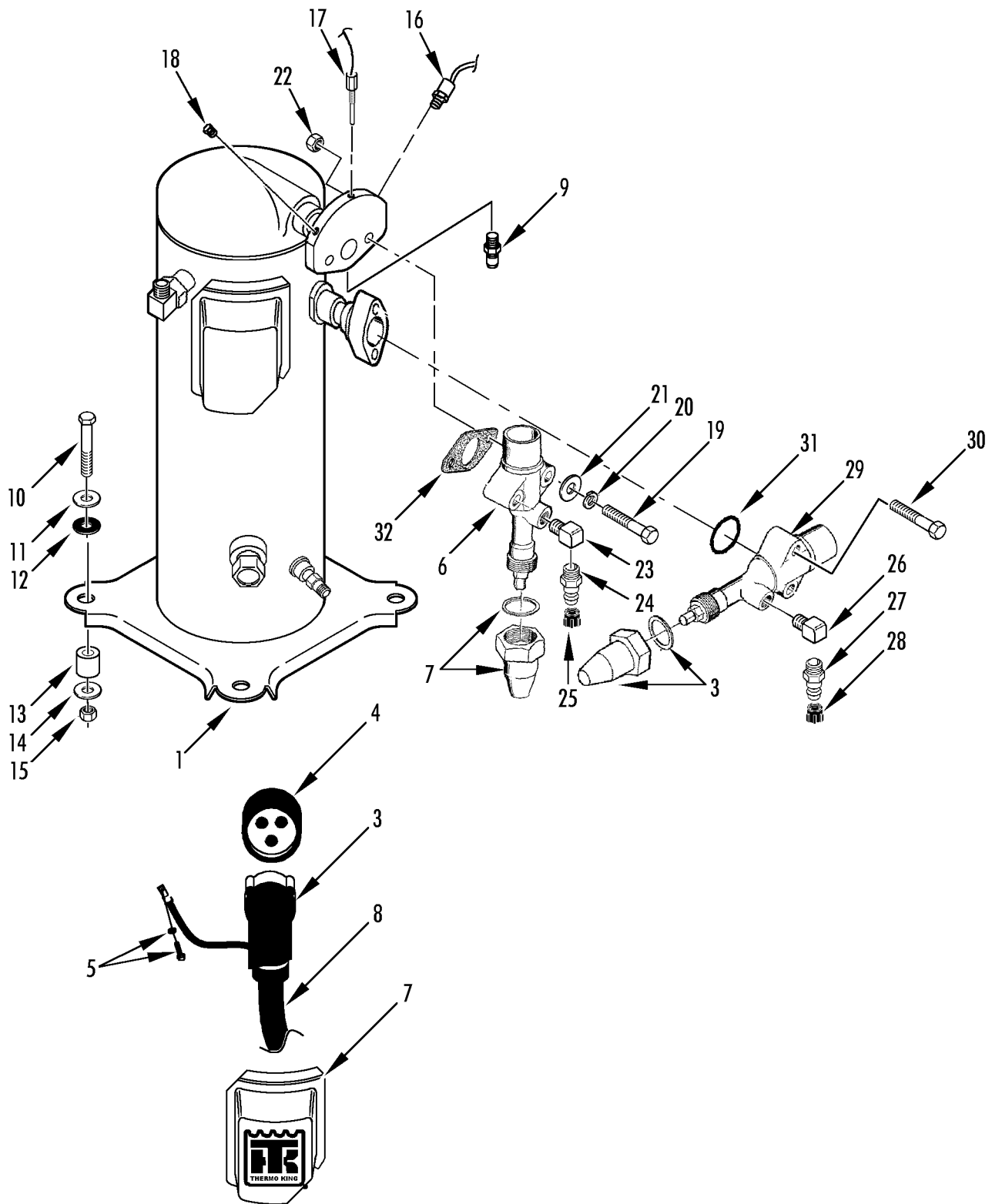
Revised
11/19/03

**REFRIGERATION (FLANGED COMPRESSOR w/
STEPPER VALVE)**



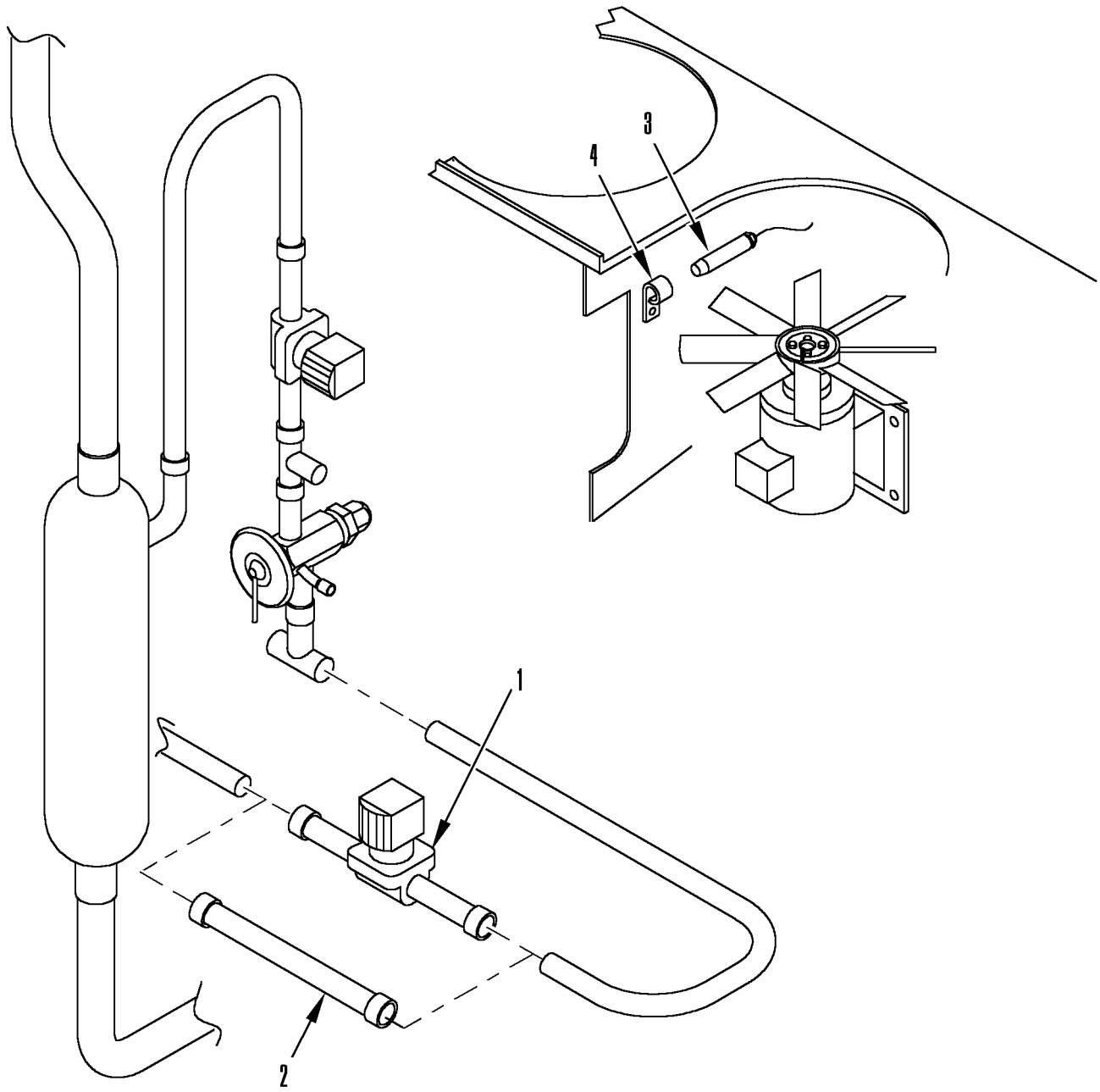
155D5

| REF | PART# | DESCRIPTION | QTY |
|------------|--------------|---|------------|
| 26 | 66-9020 | TUBE - exchanger to evaporator | 1 |
| 27 | 66-9036 | TUBE - equalizer | 1 |
| 28 | 66-9933 | TUBE - exchanger to valve | 1 |
| 29 | 66-9934 | VALVE - stepper | 1 |
| 30 | 66-9935 | TUBE - control valve | 1 |
| 31 | 41-4003 | SWITCH - lpco | 1 |
| 32 | 66-1916 | VALVE - suction | 1 |
| 33 | 66-9936 | TUBE - solenoid valve | 1 |
| 34 | 66-9866 | VALVE - solenoid (liquid injection, Alco) | 1 |
| | 41-3301 | COIL - valve | 1 |
| 35 | 66-9937 | TUBE - valve to compressor | 1 |
| 36 | 66-9938 | TUBE - tee to solenoid | 1 |
| 37 | 66-9953 | VALVE - solenoid | 1 |
| 38 | 55-8268 | SHOULDER - o-ring seal | 1 |
| 39 | 55-8269 | NUT - o-ring seal | 1 |



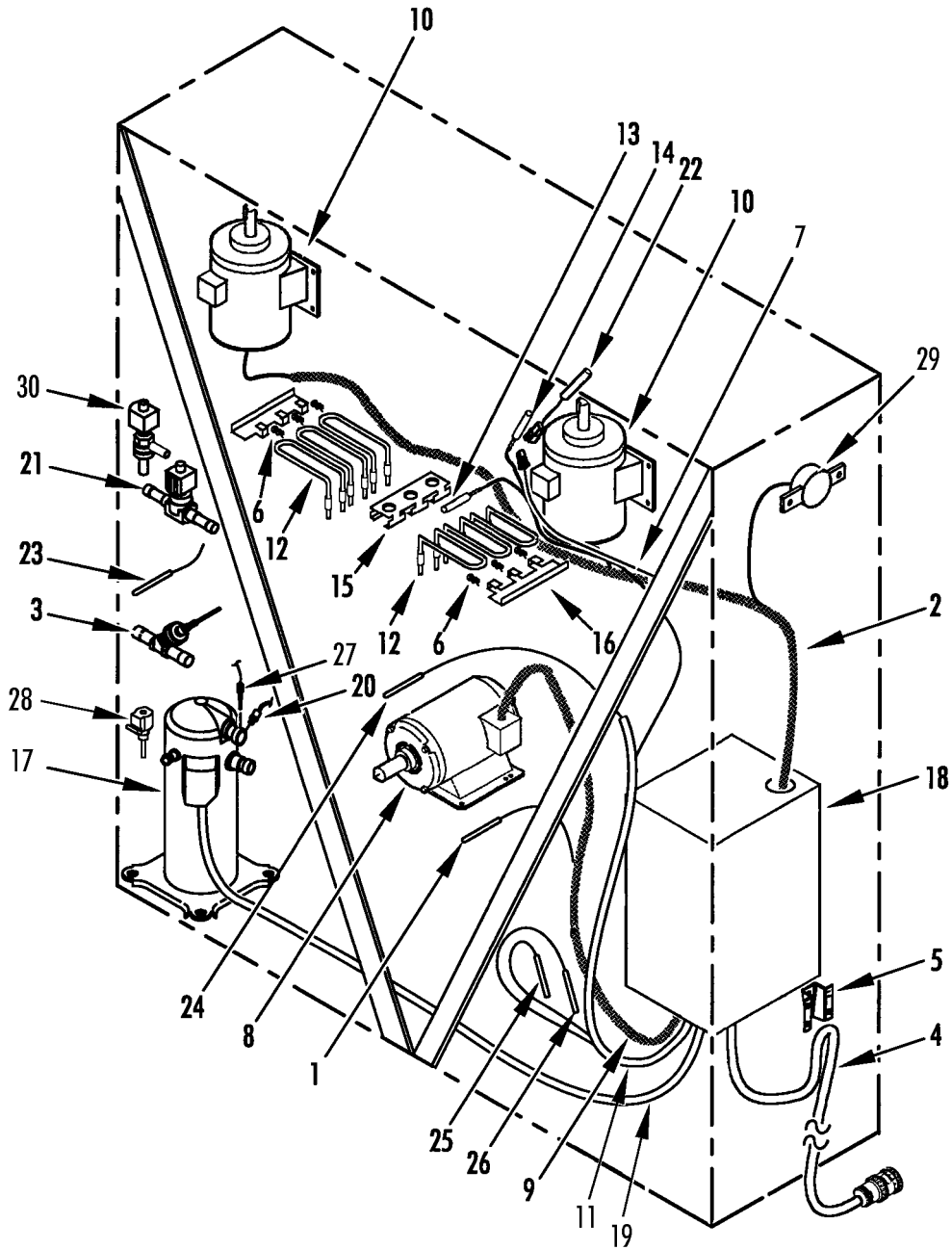


| REF | PART# | DESCRIPTION | QTY |
|-----|---------|---------------------------------|-----|
| 1 | 102-796 | COMPRESSOR - scroll (CSR 40) | 1 |
| 2 | 91-9021 | COVER - terminal box | 1 |
| 3 | 40-779 | KIT - gasket & grease | 1 |
| 4 | 33-2951 | • GASKET - power connector | 1 |
| | 33-2979 | • SEALER - silicone grease pack | 1 |
| 5 | 55-8994 | • SCREW - ground | 1 |
| | 55-8995 | • WASHER - ground | 1 |
| 6 | 66-3942 | VALVE - discharge | 1 |
| 7 | 66-3015 | CAP - valve | 1 |
| 8 | 40-782 | KIT - power cord | 1 |
| 9 | 11-2886 | VALVE | 1 |
| | 55-7213 | BODY (brass) | 1 |
| | 11-7777 | CORE - valve | 1 |
| | 55-5672 | CAP - valve | 1 |
| 10 | 55-8911 | SCREW - compressor | 4 |
| 11 | 55-8912 | FLATWASHER (13 mm) | 4 |
| 12 | 55-9012 | WASHER - vibration damper | 4 |
| 13 | 55-9013 | SPACER | 4 |
| 14 | 55-7360 | FLATWASHER (12 mm) | 4 |
| 15 | 55-8992 | NUT | 4 |
| 16 | 41-4004 | SWITCH - hpco | 1 |
| 17 | 41-2447 | SENSOR - head temperature | 1 |
| 18 | 55-3364 | PLUG | 2 |
| 19 | 55-9171 | SCREW - valve | 2 |
| 20 | 55-6999 | LOCKWASHER | 2 |
| 21 | 55-9172 | WASHER - sealing | 2 |
| 22 | 55-7344 | NUT | 2 |
| 23 | 66-7812 | ADAPTER - high side | 1 |
| 24 | 66-6610 | FITTING - highside | 1 |
| 25 | 66-7182 | CAP - fitting | 1 |
| 26 | 66-8054 | ADAPTER (lowside) | 1 |
| 27 | 66-6607 | FITTING - lowside | 1 |
| 28 | 66-7183 | CAP - fitting | 1 |
| 29 | 66-1916 | VALVE - suction | 1 |
| 30 | 55-3565 | SCREW - valve | 2 |
| | 55-6988 | FLATWASHER | 2 |
| | 55-7342 | LOCKWASHER | 2 |
| 31 | 33-727 | O-RING | 1 |
| 32 | 33-2805 | GASKET - valve | 1 |



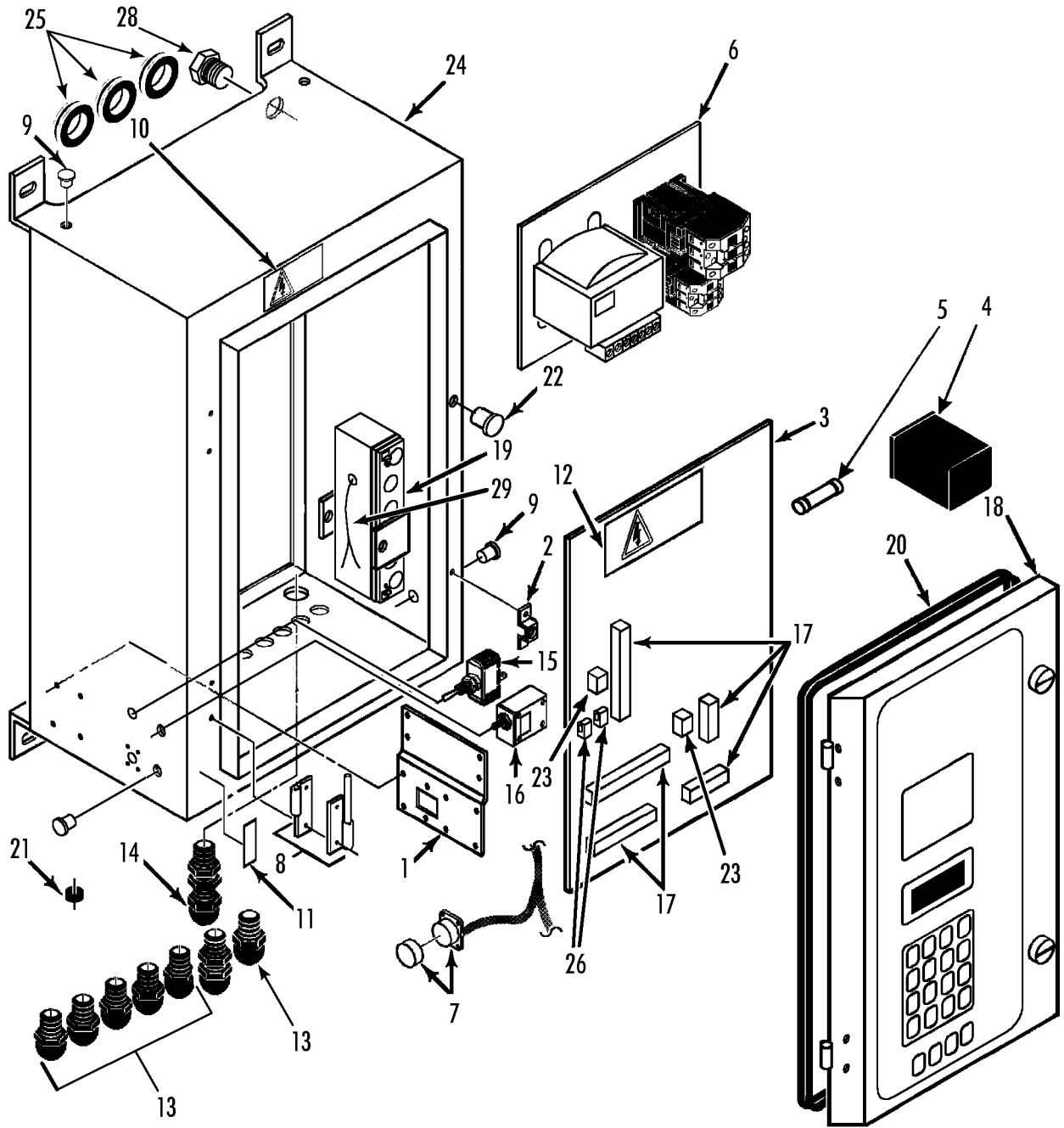


| REF | PART# | DESCRIPTION | QTY |
|-----|---------|--|-----|
| 1 | 66-9032 | VALVE - solenoid (humidity control) | 1 |
| | 504-977 | • KIT - repair (Danfoss, normally closed, no stem) | 1 |
| | 41-2399 | • COIL - liquid line valve (w/ connector) | 1 |
| | 41-5460 | •• COIL | 1 |
| 2 | 66-9159 | TUBE (replaces valve) | 1 |
| 3 | 41-5635 | SENSOR - humidity | 1 |
| | 41-2838 | HARNESS - sensor | 1 |
| 4 | 55-1203 | CLAMP - sensor | 2 |
| | 55-8991 | SPACER - clamp | 2 |
| | 55-9173 | SCREW - clamp | 2 |



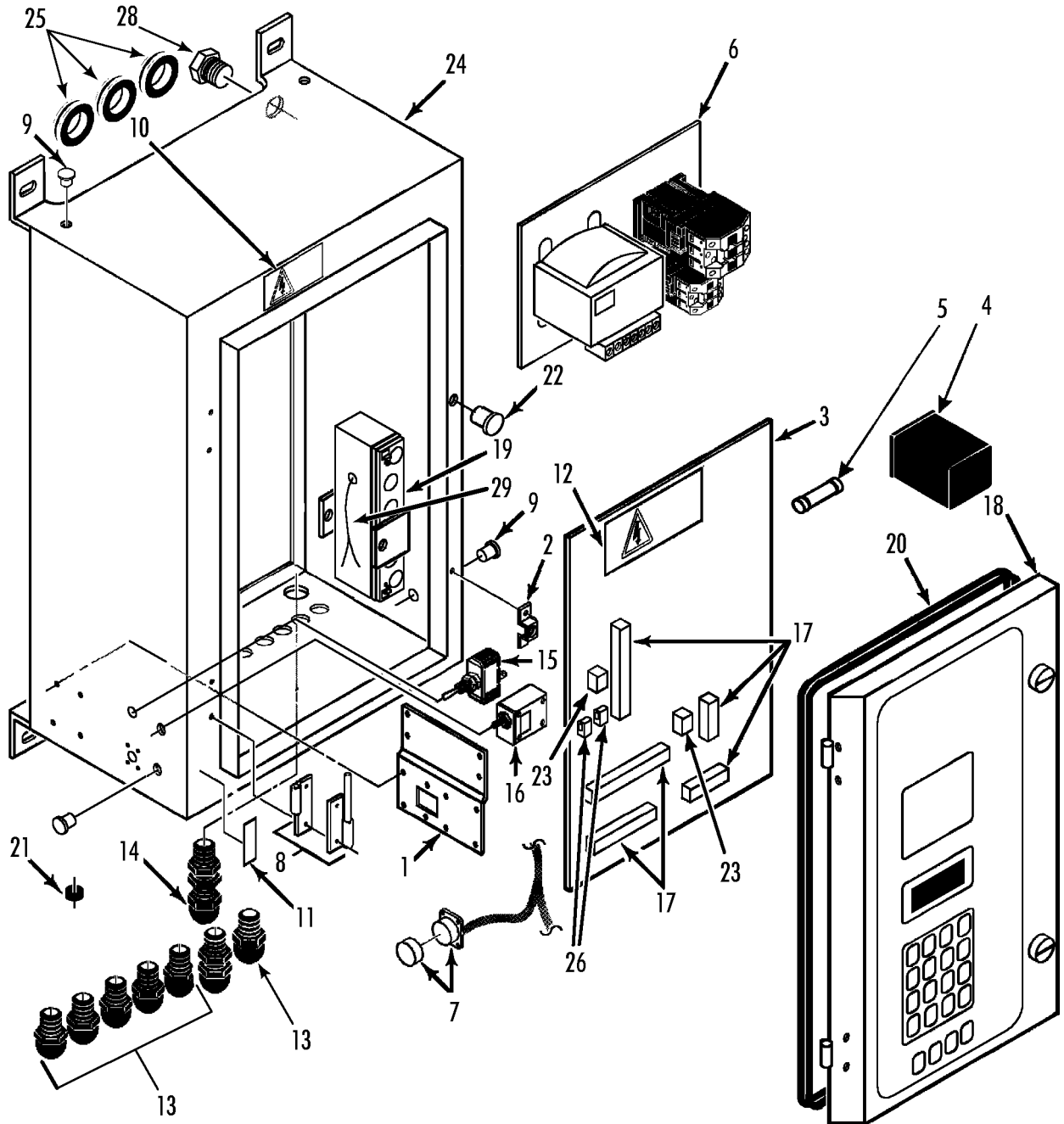


| REF | PART# | DESCRIPTION | QTY |
|-----|---------|---|-----|
| 1 | 41-3398 | SENSOR - condenser | 1 |
| 2 | 41-3277 | HARNESS - evaporator fans & heaters (see 152C1) | 1 |
| 3 | 66-9934 | VALVE - stepper | 1 |
| 4 | 41-2503 | CABLE - power | 1 |
| | 41-1976 | PLUG - power (Minnekes) | 1 |
| 5 | 91-6988 | BRACKET - cable restraint | 1 |
| | 55-9164 | SCREW - cable | 1 |
| | 55-7357 | FLATWASHER | 1 |
| | 55-7344 | NUT | 1 |
| | 55-7172 | SCREW - bracket | 4 |
| | 55-7075 | FLATWASHER | 4 |
| | 55-7170 | LOCKWASHER | 4 |
| 6 | 91-8140 | SPRING - heater | 6 |
| 7 | 41-2838 | HARNESS - sensor (humidity, MPC) | 1 |
| 8 | 104-689 | MOTOR - condenser fan (see 140D2) | 1 |
| 9 | 41-2953 | HARNESS - condenser fan (see 140D2) | 1 |
| 10 | 104-758 | MOTOR - evaporator fan (see 152C1) | 2 |
| 11 | 41-3342 | HARNESS - control box | 1 |
| 12 | 45-1791 | HEATER | 6 |
| 13 | 41-3341 | SENSOR - defrost | 1 |
| 14 | 41-2840 | SENSOR - return | 1 |
| 15 | 91-8142 | BRACKET - heater | 1 |
| 16 | 91-8467 | BRACKET - heater | 2 |
| | 55-8891 | SCREW - bracket | 11 |
| 17 | 102-796 | COMPRESSOR - scroll (see 152A4) | 1 |
| 18 | NSS | BOX - control (see 152A3) | 1 |
| | 55-9810 | SCREW - control box | 4 |
| | 55-8893 | WASHER | 4 |
| | 55-9054 | WASHER (nylon) | 4 |
| 19 | 41-4152 | CABLE - compressor | 1 |
| 20 | 41-4523 | SWITCH - hpco | 1 |
| 21 | 41-2716 | SOLENOID - dehumidifier (see 154E9) | 1 |
| 22 | 41-5635 | SENSOR - humidity | 1 |
| 23 | 41-3398 | SENSOR - compressor | 1 |
| 24 | 41-3399 | SENSOR - ambient | 1 |
| 25 | 41-3400 | SENSOR - discharge (supply) | 1 |
| 26 | 41-3344 | SENSOR - discharge (supply L.H.) | 1 |
| 27 | 504-602 | SWITCH - high temperature | 1 |
| 28 | 66-9866 | VALVE - solenoid (see 154E9) | 1 |
| 29 | 41-3401 | THERMOSTAT | 1 |
| | 55-9166 | SCREW - thermostat | 2 |
| 30 | 66-9953 | VALVE - solenoid | 1 |



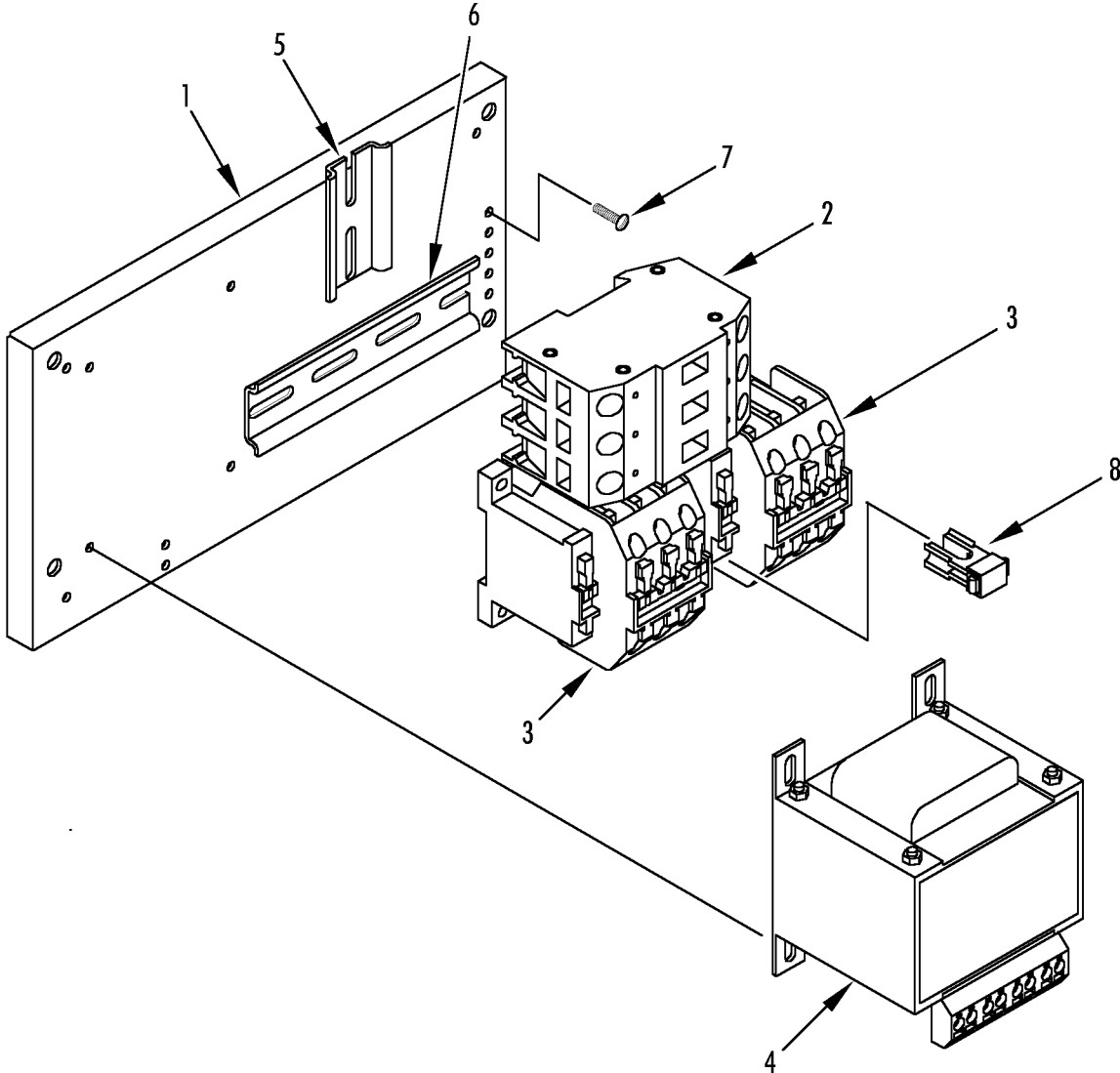


| REF | PART# | DESCRIPTION | QTY |
|-----|----------|--|-----|
| 1 | 509-1606 | BRACKET - diagram | 1 |
| | 55-3272 | RIVET - bracket | 4 |
| 2 | 509-180 | BRACKET (w/ receptacle) | 2 |
| | 55-2074 | NUT - speed | 1 |
| | 55-9166 | SCREW - bracket | 4 |
| | 55-9444 | WASHER - insulating (nylon) | 4 |
| 3 | 845-2834 | BOARD - relay (MP3000) | 1 |
| | 55-9166 | SCREW - relay board | 6 |
| 4 | 41-7587 | RELAY - power (K24-58162-02) | 6 |
| | 92-860 | CLIP - retaining | 5 |
| 5 | 504-970 | FUSE (20A) | 3 |
| | 41-3430 | HOLDER - fuse | 1 |
| | 55-9166 | SCREW - board | 2 |
| 6 | NSS | TRAY - high voltage (see 142F2) | 1 |
| 7 | 41-2853 | CABLE & PLUG - retriever (cannon threaded) | 1 |
| | 55-3272 | RIVET - plug | 4 |
| | 505-416 | CAP - plug | 1 |
| 8 | 509-1007 | HINGE - cover | 2 |
| | 55-8875 | SCREW - hinge | 4 |
| | 55-8877 | WASHER (nylon) | 4 |
| | 509-955 | INSULATOR | 2 |
| | 55-8893 | WASHER | 2 |
| | 505-566 | LOCKWASHER | 2 |
| | 55-7042 | NUT | 4 |
| 9 | 505-408 | PLUG - seal | 3 |
| 10 | 91-9833 | LABEL - high voltage | 1 |
| 11 | 509-1156 | LABEL - on/off | 1 |
| 12 | 509-1155 | LABEL - relay board | 1 |
| 13 | 55-5900 | FITTING - harness | 6 |
| 14 | 55-5257 | FITTING - harness | 2 |
| 15 | 41-3595 | SWITCH - unit on/off | 1 |
| | 92-239 | BOOT - terminal | 1 |
| 16 | 41-3276 | BREAKER - circuit | 1 |
| | 504-381 | BOOT - circuit breaker | 1 |
| 17 | 504-841 | TERMINAL BLOCK (4 pole) | 1 |
| | 504-842 | BLOCK - terminal (5 pole) | 1 |
| | 504-845 | BLOCK - terminal (8 pole) | 1 |
| | 504-1413 | BLOCK - terminal (12 pole) | 1 |
| | 41-3599 | BLOCK - terminal (14 pole) | 1 |
| | 41-3608 | BLOCK - terminal (18 pole) | 1 |
| 18 | NSS | DOOR - controller (see 150G7) | 1 |
| 19 | 203-509 | BATTERY (12V, 1.9 AH) | 1 |



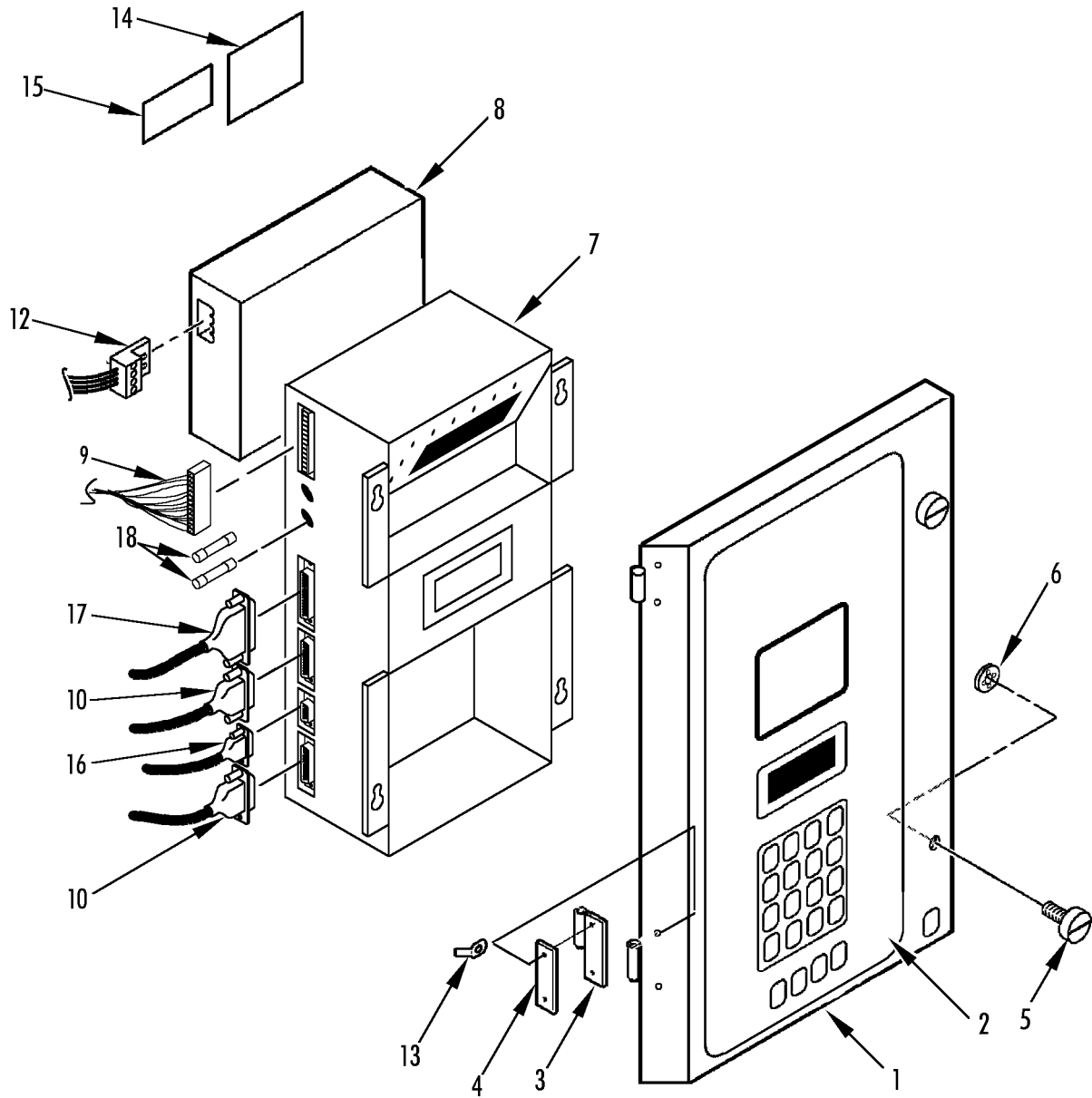


| REF | PART# | DESCRIPTION | QTY |
|-----|---------|---|-----|
| 20 | 503-119 | GASKET - cover | 1 |
| 21 | 33-3838 | GROMMET | 1 |
| 22 | 505-570 | PLUG - seal | 3 |
| 23 | 41-2832 | CONNECTOR - plug (2 pin, short circuit) | 1 |
| | 504-327 | PLUG (2 pole) | 1 |
| 24 | 98-5454 | BOX - control | 1 |
| 25 | 33-3215 | GROMMET | 3 |
| 26 | 41-2833 | PLUG - dim | 2 |
| 27 | 55-5885 | CONNECTOR - harness | 1 |
| 28 | 55-9346 | PLUG - seal (M12) | 1 |
| 29 | 41-3335 | CABLE - battery | 1 |



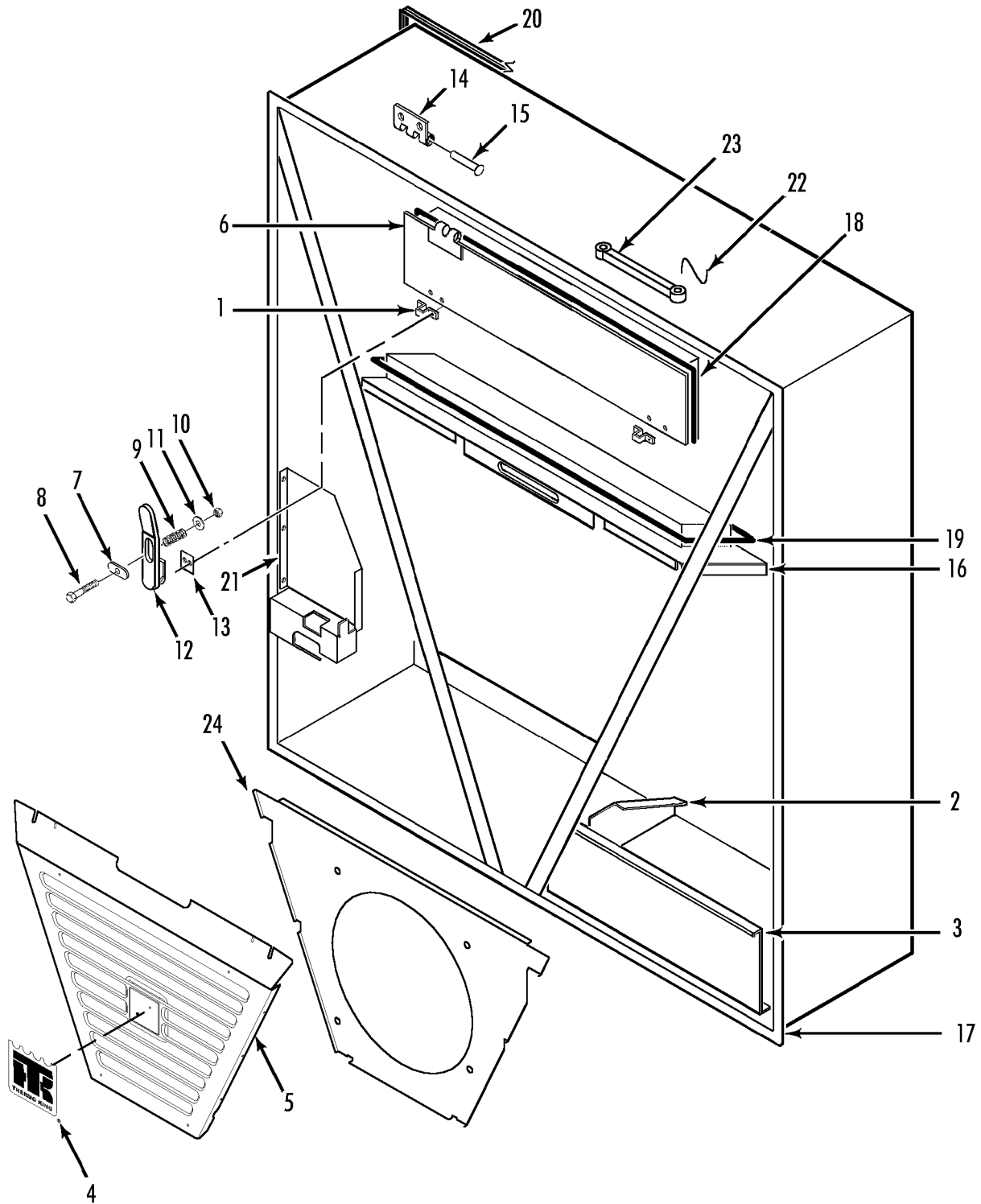


| REF | PART# | DESCRIPTION | QTY |
|-----|----------|----------------------------|-----|
| 1 | 91-9913 | PLATE - bottom | 1 |
| | 55-7372 | SCREW - plate to box | 4 |
| | 55-7008 | NUT | 4 |
| 2 | 504-495 | BREAKER - circuit (25 amp) | 1 |
| 3 | 41-3605 | CONTACTOR (CI 25) | 2 |
| 4 | 41-3317 | TRANSFORMER | 1 |
| | 509-1610 | SCREW - transformer | 4 |
| 5 | 91-9914 | RAIL - din (60 mm) | 1 |
| 6 | 91-9915 | RAIL - din (125 mm) | 1 |
| 7 | 55-9166 | SCREW (pan hd) | 11 |
| | 55-7404 | LOCKWASHER | 6 |
| 8 | 41-3604 | INTERLOCK | 1 |



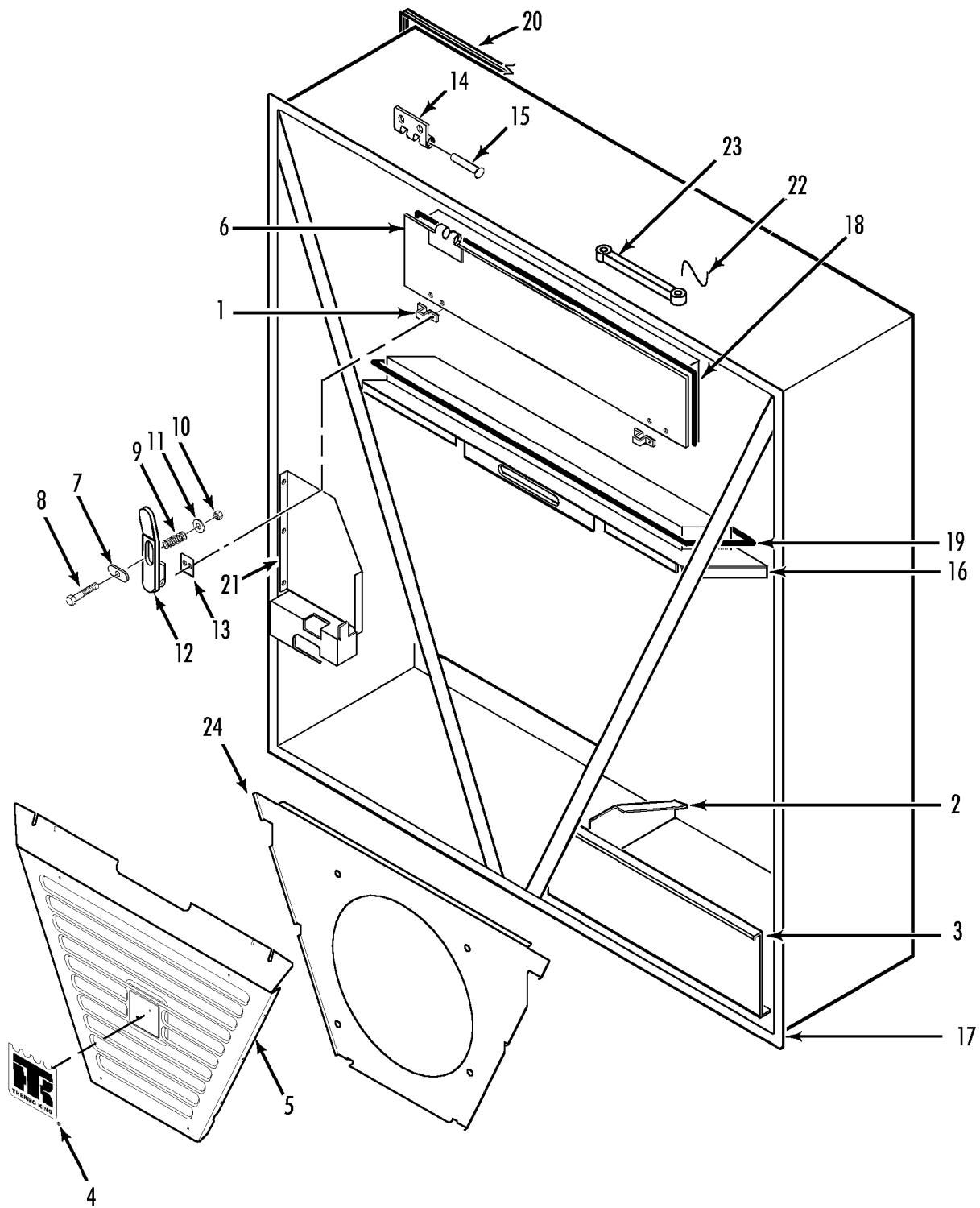


| REF | PART# | DESCRIPTION | QTY |
|-----|----------|--|-----|
| 1 | 91-9380 | DOOR - control box | 1 |
| 2 | 41-4142 | KEYPAD (MP3000) | 1 |
| 3 | 91-9381 | HINGE - door | 2 |
| | 55-7407 | SCREW - hinge | 4 |
| | 55-9444 | WASHER (nylon) | 4 |
| | 55-8922 | WASHER | 4 |
| | 55-7034 | NUT | 4 |
| 4 | 55-9392 | INSULATOR - hinge | 2 |
| 5 | 505-181 | SCREW - door | 2 |
| 6 | 55-8919 | RETAINER - screw | 2 |
| 7 | 845-1909 | CONTROLLER (MP3000) | 1 |
| 8 | 845-1898 | MODEM - RMM | 1 |
| 9 | 41-3335 | CABLE - battery | 1 |
| 10 | 41-3602 | CABLE - connecting (25 pin, No. 3) | 2 |
| 11 | Not Used | | |
| 12 | 41-2469 | CABLE - connecting (RMM) | 1 |
| 13 | 505-586 | ADAPTER - push-on | 1 |
| | 505-511 | NUT | 1 |
| 14 | 91-9382 | NAMEPLATE - controller warning | 1 |
| 15 | 91-9383 | NAMEPLATE - phase select | 1 |
| 16 | 41-2853 | CABLE & PLUG - retriever (cannon threaded) | 1 |
| | 41-3402 | CABLE - plug (complete) | 1 |
| | 41-2853 | • CABLE - retriever | 1 |
| 17 | 41-2835 | CABLE - connecting (No. 2) | 1 |
| | 41-3402 | CABLE - plug (complete) | 1 |
| 18 | 44-6777 | FUSE (2 amp 500V) | 2 |
| | 504-880 | CAP - fuse | 2 |



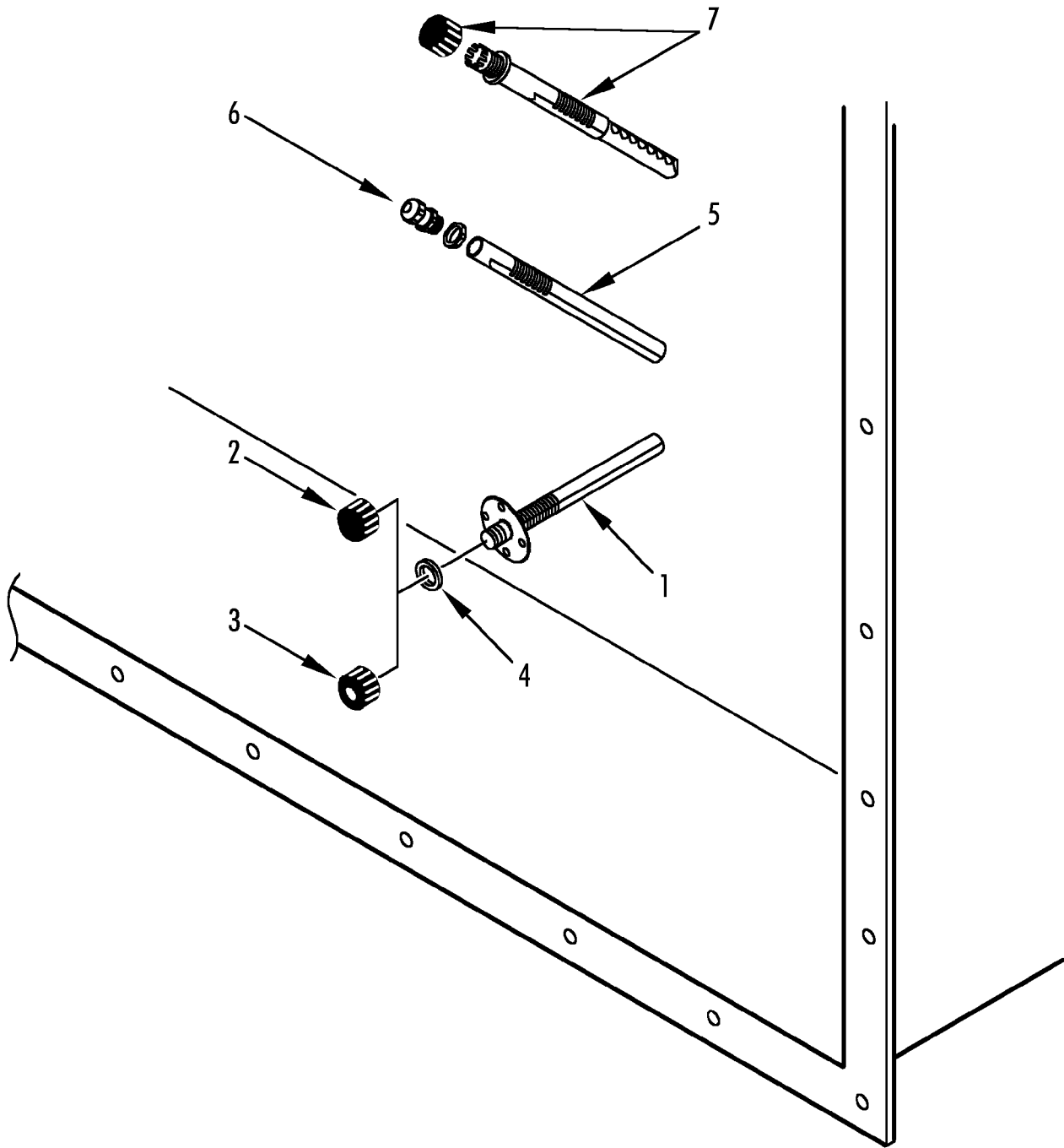


| REF | PART# | DESCRIPTION | QTY |
|-----|----------|-------------------------------|-----|
| 1 | 91-8195 | KEEPER - door latch | 2 |
| | 55-9312 | SCREW - keeper (TIR seal) | 4 |
| | 55-6995 | WASHER | 4 |
| | 55-9054 | WASHER (nylon) | 4 |
| | 55-8877 | WASHER (nylon) | 4 |
| 2 | 91-8108 | BRACKET - frame | 1 |
| | 55-6993 | SCREW - bracket | 3 |
| | 55-6988 | WASHER | 6 |
| | 55-9541 | WASHER (nylon) | 6 |
| | 55-9380 | NUT | 3 |
| 3 | 91-9504 | PLATE - cable storage (front) | 1 |
| | 55-9168 | NUT | 2 |
| | 55-9054 | WASHER (nylon) | 6 |
| | 55-6994 | SCREW - plate | 2 |
| | 55-6695 | FLATWASHER | 6 |
| | 55-8933 | WASHER (nylon) | 6 |
| 4 | 91-9511 | NAMEPLATE - TK | 1 |
| 5 | 98-5925 | GRILLE - condenser | 1 |
| | 55-8910 | SCREW - grille | 4 |
| | 55-7075 | FLATWASHER | 4 |
| | 55-9054 | WASHER (nylon) | 4 |
| 6 | 98-6518 | DOOR - evaporator | 1 |
| | 92-2995 | • HINGE - evap door | 2 |
| | 51-620 | • RIVET - hinge | 8 |
| 7 | 91-9040 | • KNOB | 2 |
| 8 | 55-7035 | • SCREW - door | 2 |
| 9 | 91-8199 | • SPRING | 2 |
| 10 | 55-7354 | • NUT | 2 |
| 11 | 55-9054 | • WASHER (nylon) | 2 |
| 12 | 91-9041 | • LATCH - door | 2 |
| | 55-2864 | • RIVET - latch | 4 |
| 13 | 91-8134 | • INSULATOR - latch | 2 |
| 14 | 509-1654 | • HINGE | 2 |
| | 55-9313 | • SCREW - hinge (TIR seal) | 4 |
| | 55-9541 | • WASHER (nylon) | 4 |
| 15 | 91-8256 | • PIN - hinge (w/ snap) | 2 |
| 16 | 98-5199 | DOOR - heater section | 1 |
| | 55-6993 | SCREW - door | 4 |
| | 55-9313 | SCREW - door (TIR seal) | 1 |
| | 55-9541 | WASHER (nylon) | 8 |



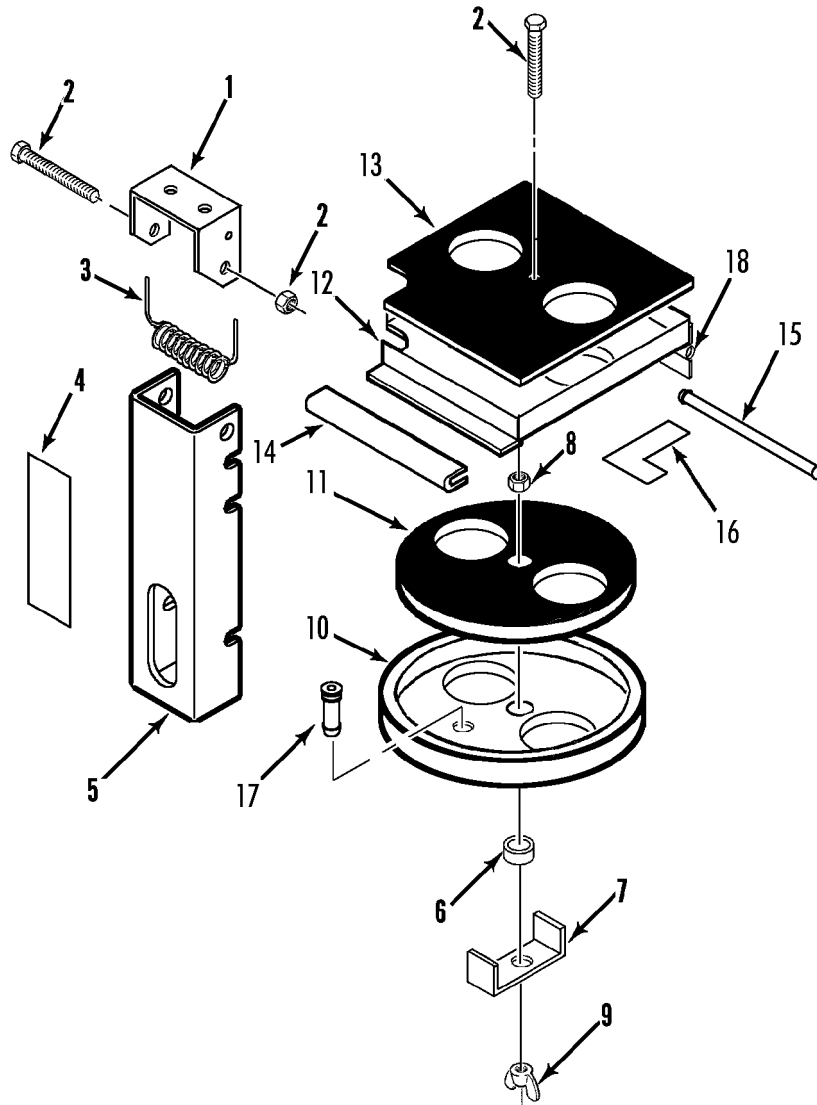


| REF | PART# | DESCRIPTION | QTY |
|-----|---------|--------------------------------|-----|
| | 55-7085 | WASHER | 8 |
| 17 | 98-5638 | FRAME - condenser | 1 |
| 18 | 33-3969 | GASKET - evaporator door | 1 |
| 19 | 33-3002 | GASKET - door | 1 |
| 20 | 33-2983 | GASKET - unit | 1 |
| 21 | 91-8728 | COVER (instead of thermometer) | 1 |
| | 55-7391 | SCREW - cover | 3 |
| | 55-6988 | FLATWASHER | 3 |
| 22 | 91-9039 | HOOK - strap | 1 |
| | 55-3065 | CLAMP - hook | 1 |
| | 55-9166 | SCREW - clamp | 1 |
| 23 | 509-937 | STRAP - door | 1 |
| | 55-9173 | SCREW - strap | 1 |
| | 55-7089 | FLATWASHER | 2 |
| 24 | 91-9912 | ORIFICE - condenser | 1 |
| | 55-7035 | SCREW - orifice | 4 |
| | 55-7075 | FLATWASHER | 4 |
| | 55-3045 | WASHER - dome | 4 |
| | 55-6997 | NUT - captive | 4 |



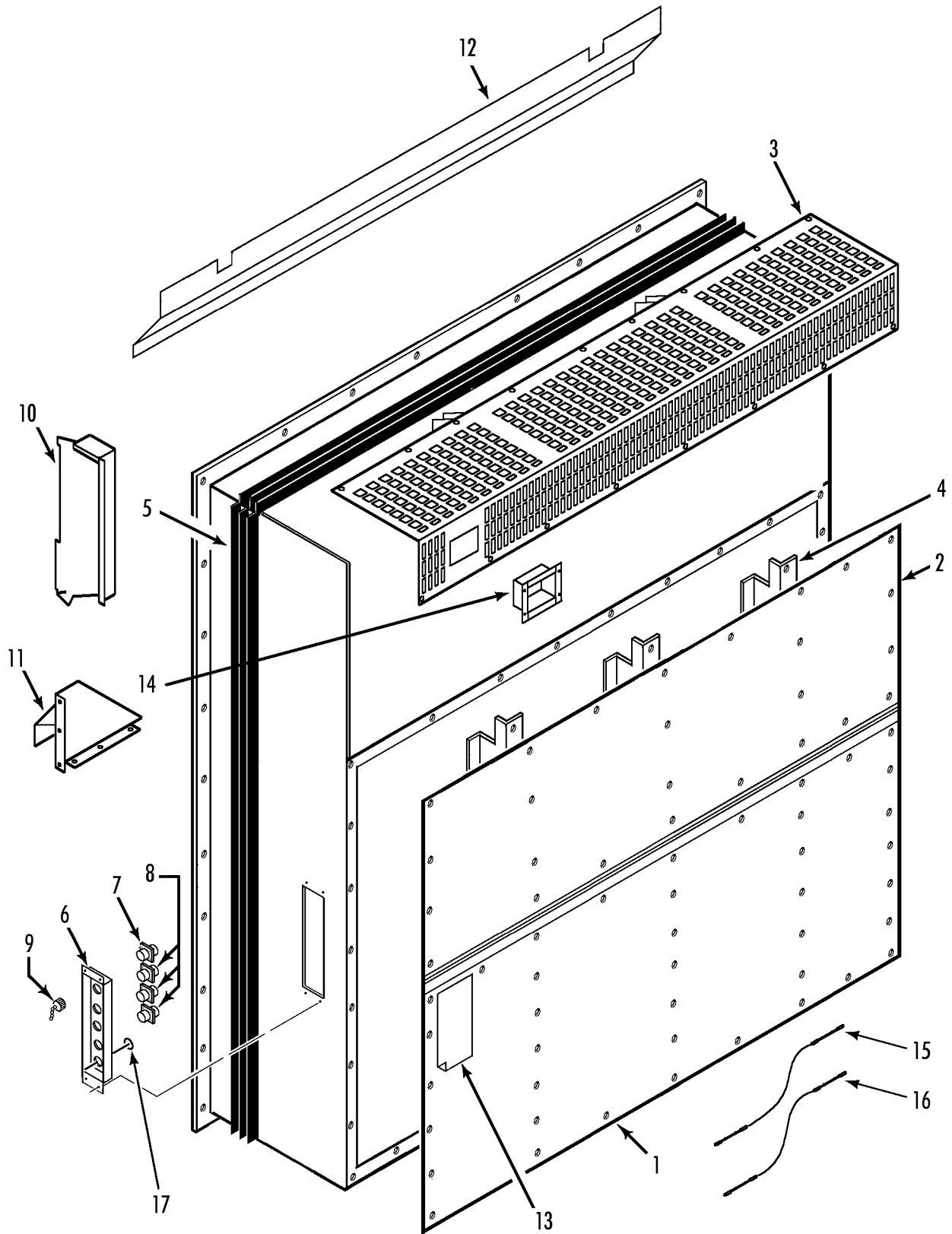


| REF | PART# | DESCRIPTION | QTY |
|-----|---------|---------------------------|-----|
| 1 | 91-8098 | RETAINER - probe | 1 |
| 2 | 509-964 | CAP - retainer (w/o hole) | 1 |
| 3 | 91-8702 | CAP - retainer (w/ hole) | 1 |
| 4 | 33-2960 | GASKET - retainer | 1 |
| 5 | 91-9754 | POCKET - sensor | 1 |
| 6 | 55-6409 | CONNECTOR - sensor | 1 |
| 7 | 91-9754 | POCKET - sensor | 2 |



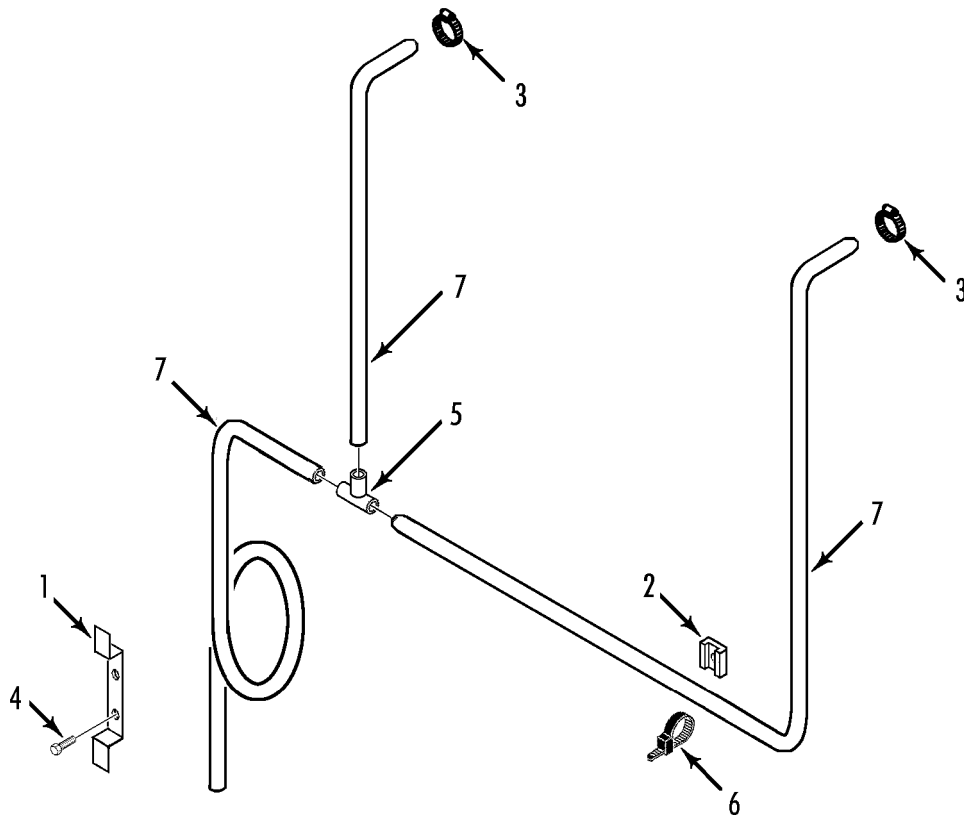


| REF | PART# | DESCRIPTION | QTY |
|-----|---------|-------------------------------------|-----|
| | 91-8252 | VENT - air (complete) | 1 |
| 1 | 91-9048 | • BRACKET - air vent handle | 1 |
| 2 | 51-1426 | • SCREW - handle | 1 |
| | 51-1474 | • SCREW (M8 x 1.25 x 65, ss) | 1 |
| | 55-9541 | • WASHER (nylon) | 4 |
| | 51-1427 | • NUT | 1 |
| 3 | 91-8100 | • SPRING | 1 |
| 4 | 92-440 | • NAMEPLATE - Do Not Open Below 0 C | 1 |
| 5 | 91-8102 | • HANDLE - air vent | 1 |
| 6 | 77-2467 | • BEARING - slide | 1 |
| 7 | 91-8104 | • BRACKET - handle | 1 |
| 8 | 51-1428 | • NUT | 2 |
| | 51-1429 | • LOCKWASHER | 1 |
| | 51-1430 | • FLATWASHER | 1 |
| 9 | 51-1431 | • NUT - wing | 1 |
| 10 | 91-8103 | DISK - air vent | 1 |
| 11 | 33-4255 | • GASKET - air vent | 1 |
| 12 | 91-8105 | • PLATE - air vent | 1 |
| | 55-7172 | • SCREW - plate | 4 |
| | 55-7075 | • FLATWASHER | 4 |
| | 55-9541 | • WASHER (nylon) | 4 |
| 13 | 33-2944 | • GASKET - air vent | 1 |
| 14 | 91-8663 | • PROTECTOR - edge | 1 |
| 15 | 91-8106 | • PIN - hinge | 1 |
| 16 | 91-8107 | • NAMEPLATE - Do Not Open Below 0 C | 1 |
| 17 | 55-9168 | • ADAPTER - hose | 1 |
| 18 | 92-411 | • HINGE - air vent | 1 |
| | 51-619 | SCREW - vent | 8 |
| | 55-8933 | WASHER - insulator (6.4 id) | 4 |
| | 55-7075 | FLATWASHER | 4 |
| | 55-9054 | WASHER - insulator (8.4 id) | 6 |
| | 51-167 | FLATWASHER | 6 |
| | 55-7339 | NUT | 6 |



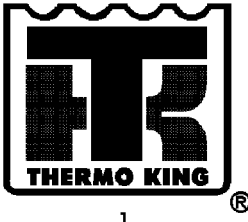


| REF | PART# | DESCRIPTION | QTY |
|-----|---------|---|-----|
| 1 | 91-8258 | PLATE - rear (bottom) | 1 |
| 2 | 98-5335 | PLATE - rear (top) | 1 |
| | 55-3136 | RIVET - plate | 63 |
| 3 | 98-5523 | GRILLE - evaporator (Transfresh) | 1 |
| | 55-2264 | RIVET - grille | 17 |
| 4 | 91-8097 | CHANNEL - Z | 3 |
| | 55-9055 | RIVET - channel | 21 |
| 5 | 33-2983 | GASKET - unit | 1 |
| 6 | 91-9834 | PANEL - USDA receptacle | 1 |
| | 55-9211 | RIVET - panel | 4 |
| 7 | 41-2405 | CONNECTOR - receptacle (5 pin, bayonet) | 1 |
| 8 | 504-209 | RECEPTACLE (4 pin, bayonet) | 3 |
| | 55-9322 | RIVET - receptacle | 16 |
| 9 | 41-2406 | CAP - dust (receptacle) | 1 |
| | 91-3685 | CHAIN (only one chain) | 1 |
| | 55-9323 | RIVET - cap | 1 |
| 10 | 91-9329 | CHANNEL - air | 1 |
| | 203-389 | SEALER - polyurethane | A/R |
| | 55-8902 | RIVET - channel | 8 |
| 11 | 91-9330 | INLET - fresh air | 1 |
| | 55-8902 | RIVET - inlet | 8 |
| | 203-389 | SEALER - polyurethane | A/R |
| 12 | 91-9331 | CHANNEL - fresh air | 1 |
| | 55-8891 | SCREW - channel | 11 |
| | 55-2270 | RIVET - channel | 10 |
| 13 | 91-8734 | NAMEPLATE - USDA Connections | 1 |
| 14 | 91-8715 | BOX - Transfresh | 1 |
| | 55-7713 | RIVET - box | 4 |
| 15 | 41-2554 | CABLE - Transfresh (red bandwrap) | 1 |
| 16 | 41-2555 | CABLE - Transfresh (green bandwrap) | 1 |
| 17 | 505-416 | PLUG | 1 |





| REF | PART# | DESCRIPTION | QTY |
|-----|---------|--------------------|-----|
| 1 | 91-8244 | BRACKET - hose | 1 |
| 2 | 99-3281 | MOUNT - cable tie | 5 |
| | 55-2260 | RIVET - anchor | 5 |
| 3 | 55-2686 | CLAMP - hose | 2 |
| 4 | 55-8891 | SCREW - bracket | 2 |
| 5 | 55-9208 | CONNECTOR - T-hose | 1 |
| 6 | 55-2330 | BANDWRAP | 6 |
| 7 | 501-254 | HOSE - flex | 1 |



CAUTION! CONDENSER FAN MAY CYCLE ON/OFF DURING NORMAL OPERATION

9

R404A

5

INGERSOLL-RAND

2

WARNING
FANS START
AUTOMATICALLY



6

THERMO KING

4

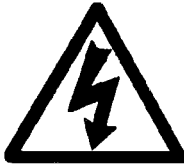
WARNING
Hot Components
Compressor discharge
may be hot!



7

Smart Reeper

3

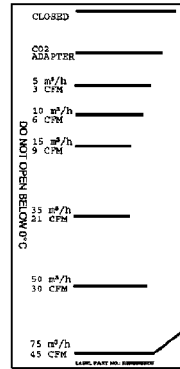


10

WARNING !

TURN POWER OFF
BEFORE DISCONNECTING
DATALOGGER OR
CONTROLLER.

11



14

DO NOT OPEN BELOW 0°C 32°F

150 m³/h
90 CFM

225 m³/h
135CFM

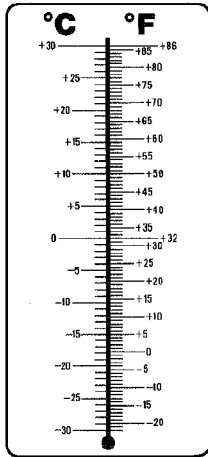
280 m³/h
165CFM

PART NO: 3B10016H01
3B10016H01
R5MC

15




16



8

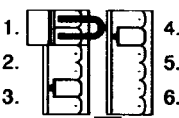
Phase selector.



388-1173
3A87270001
R5LA

12

MANUAL CONTROL



1. COOL 1 4. NOT IN USE
2. COOL 2 5. DEFROST
3. NOT IN USE 6. HEAT

388-1174
3A87270001
R5LA

13



| REF | PART# | DESCRIPTION | QTY |
|-----|---------|-------------------------------------|-----|
| 1 | 91-9511 | NAMEPLATE - TK | 1 |
| 2 | 91-8746 | NAMEPLATE - Ingersoll Rand | 1 |
| 3 | 91-8665 | NAMEPLATE - Smart Reefer | 1 |
| 4 | 91-9778 | NAMEPLATE - Thermo King | 1 |
| 5 | 91-5882 | NAMEPLATE - R404A | 1 |
| 6 | 91-8694 | NAMEPLATE - Warning, Fan Start | 1 |
| 7 | 91-8695 | NAMEPLATE - Warning, Hot Components | 1 |
| 8 | 91-8755 | NAMEPLATE - Temperature Conversion | 1 |
| 9 | 91-7475 | NAMEPLATE - Compressor | 1 |
| 10 | 91-9833 | NAMEPLATE - Caution | 1 |
| 11 | 91-9382 | NAMEPLATE - Warning | 1 |
| 12 | 91-9383 | NAMEPLATE - Main Relay Board | 1 |
| 13 | 91-9384 | NAMEPLATE - Main Relay Board | 1 |
| 14 | 91-8107 | NAMEPLATE - Air Exchanger | 1 |
| 15 | 91-9441 | NAMEPLATE - Air Exchanger | 1 |
| 16 | 91-8734 | NAMEPLATE - USDA Connections | 1 |
| 17 | 91-8154 | NAMEPLATE - R404A | 1 |
| 18 | 92-259 | NAMEPLATE - Power Saver | 1 |

INDEX NUMERICAL BY PART NUMBER

| | | | | | |
|---------|-------------------|----------|---------------|---------|------------------------------|
| 102-796 | 10, 14, 18 | 41-3595 | 20 | 51-620 | 28 |
| 104-689 | 6, 18 | 41-3599 | 20 | 55-1203 | 16 |
| 104-758 | 8, 18 | 41-3602 | 26 | 55-2074 | 20 |
| 11-2886 | 14 | 41-3604 | 24 | 55-2260 | 38 |
| 11-7777 | 14 | 41-3605 | 24 | 55-2264 | 36 |
| 203-389 | 36 | 41-3608 | 20 | 55-2270 | 36 |
| 203-509 | 20 | 41-3685 | 8 | 55-2296 | 10 |
| 33-2805 | 14 | 41-4003 | 12 | 55-2330 | 38 |
| 33-2944 | 34 | 41-4004 | 14 | 55-2686 | 38 |
| 33-2946 | 8 | 41-4018 | 8 | 55-2864 | 28 |
| 33-2949 | 10 | 41-4142 | 26 | 55-3045 | 6, 30 |
| 33-2950 | 10 | 41-4152 | 18 | 55-3065 | 30 |
| 33-2951 | 14 | 41-4523 | 18 | 55-3136 | 36 |
| 33-2960 | 32 | 41-5460 | 16 | 55-3251 | 10 |
| 33-2979 | 14 | 41-5635 | 16, 18 | 55-3272 | 20 |
| 33-2983 | 30, 36 | 41-7587 | 20 | 55-3364 | 14 |
| 33-3002 | 30 | 44-6777 | 26 | 55-3565 | 14 |
| 33-3007 | 10 | 44-8340 | 6 | 55-4390 | 10 |
| 33-3044 | 6, 8 | 45-1791 | 18 | 55-5257 | 20 |
| 33-3215 | 8, 22 | 501-254 | 38 | 55-5672 | 14 |
| 33-367 | 6, 8 | 503-119 | 22 | 55-5885 | 22 |
| 33-3838 | 8, 22 | 504-1413 | 20 | 55-5900 | 6, 8, 20 |
| 33-3969 | 30 | 504-209 | 36 | 55-6409 | 32 |
| 33-4255 | 34 | 504-327 | 22 | 55-6695 | 28 |
| 33-727 | 14 | 504-381 | 20 | 55-6988 | 6, 10, 14, 28, 30 |
| 40-779 | 14 | 504-495 | 24 | 55-6993 | 8, 10, 28 |
| 40-782 | 14 | 504-602 | 18 | 55-6994 | 10, 28 |
| 41-1976 | 18 | 504-841 | 20 | 55-6995 | 28 |
| 41-2399 | 16 | 504-842 | 20 | 55-6997 | 6, 30 |
| 41-2405 | 36 | 504-845 | 20 | 55-6999 | 14 |
| 41-2406 | 36 | 504-880 | 26 | 55-7008 | 24 |
| 41-2447 | 14 | 504-970 | 20 | 55-7034 | 26 |
| 41-2469 | 26 | 504-977 | 16 | 55-7035 | 6, 28, 30 |
| 41-2503 | 18 | 505-181 | 26 | 55-7042 | 10, 20 |
| 41-2554 | 36 | 505-408 | 20 | 55-7066 | 6, 8 |
| 41-2555 | 36 | 505-416 | 20, 36 | 55-7075 | 8, 10, 18, 28, 30, 34 |
| 41-2716 | 18 | 505-511 | 26 | 55-7085 | 8, 30 |
| 41-2832 | 22 | 505-566 | 20 | 55-7089 | 30 |
| 41-2833 | 22 | 505-570 | 22 | 55-7170 | 18 |
| 41-2835 | 26 | 505-586 | 26 | 55-7172 | 8, 10, 18, 34 |
| 41-2838 | 16, 18 | 509-1007 | 20 | 55-7213 | 14 |
| 41-2840 | 18 | 509-1155 | 20 | 55-7339 | 6, 8, 34 |
| 41-2853 | 20, 26 | 509-1156 | 20 | 55-7342 | 6, 8, 14 |
| 41-2953 | 6, 18 | 509-1606 | 20 | 55-7344 | 14, 18 |
| 41-3276 | 20 | 509-1610 | 24 | 55-7354 | 28 |
| 41-3277 | 8, 18 | 509-1654 | 28 | 55-7357 | 18 |
| 41-3301 | 10, 12 | 509-180 | 20 | 55-7360 | 14 |
| 41-3317 | 24 | 509-937 | 30 | 55-7372 | 24 |
| 41-3335 | 22, 26 | 509-955 | 20 | 55-7391 | 30 |
| 41-3341 | 18 | 509-964 | 32 | 55-7404 | 24 |
| 41-3342 | 18 | 51-1426 | 34 | 55-7407 | 26 |
| 41-3344 | 18 | 51-1427 | 34 | 55-7713 | 36 |
| 41-3394 | 10 | 51-1428 | 34 | 55-8137 | 6 |
| 41-3398 | 18 | 51-1429 | 34 | 55-8268 | 12 |
| 41-3399 | 18 | 51-1430 | 34 | 55-8269 | 12 |
| 41-3400 | 18 | 51-1431 | 34 | 55-8559 | 6 |
| 41-3401 | 18 | 51-1474 | 34 | 55-8875 | 20 |
| 41-3402 | 26 | 51-167 | 34 | 55-8877 | 20, 28 |
| 41-3430 | 20 | 51-619 | 34 | 55-8891 | 8, 18, 36, 38 |

INDEX NUMERICAL BY PART NUMBER

| | | | | | |
|---------|-----------------------|----------|---------------|---------|---------------|
| 55-8893 | 18, 20 | 66-9159 | 16 | 91-8695 | 40 |
| 55-8902 | 36 | 66-9307 | 10 | 91-8702 | 32 |
| 55-8903 | 8 | 66-9428 | 10 | 91-8715 | 36 |
| 55-8904 | 8 | 66-9866 | 12, 18 | 91-8728 | 30 |
| 55-8908 | 6 | 66-9930 | 10 | 91-8734 | 36, 40 |
| 55-8910 | 28 | 66-9931 | 10 | 91-8746 | 40 |
| 55-8911 | 14 | 66-9932 | 10 | 91-8755 | 40 |
| 55-8912 | 14 | 66-9933 | 12 | 91-9021 | 14 |
| 55-8919 | 26 | 66-9934 | 12, 18 | 91-9039 | 30 |
| 55-8922 | 26 | 66-9935 | 12 | 91-9040 | 28 |
| 55-8933 | 28, 34 | 66-9936 | 12 | 91-9041 | 28 |
| 55-8991 | 16 | 66-9937 | 12 | 91-9048 | 34 |
| 55-8992 | 14 | 66-9938 | 12 | 91-9328 | 8 |
| 55-8994 | 14 | 66-9953 | 12, 18 | 91-9329 | 36 |
| 55-8995 | 14 | 67-1028 | 10 | 91-9330 | 36 |
| 55-9012 | 14 | 67-1558 | 8, 10 | 91-9331 | 36 |
| 55-9013 | 14 | 67-1614 | 10 | 91-9380 | 26 |
| 55-9054 | 10, 18, 28, 34 | 67-1792 | 10 | 91-9381 | 26 |
| 55-9055 | 36 | 67-1923 | 8 | 91-9382 | 26, 40 |
| 55-9162 | 8 | 77-1401 | 6, 8 | 91-9383 | 26, 40 |
| 55-9164 | 18 | 77-1498 | 6, 8 | 91-9384 | 40 |
| 55-9166 | 18, 20, 24, 30 | 77-2467 | 34 | 91-9441 | 40 |
| 55-9168 | 28, 34 | 78-1117 | 8 | 91-9504 | 28 |
| 55-9171 | 14 | 78-1173 | 6 | 91-9511 | 28, 40 |
| 55-9172 | 14 | 78-1197 | 6 | 91-9754 | 32 |
| 55-9173 | 16, 30 | 845-1898 | 26 | 91-9778 | 40 |
| 55-9207 | 10 | 845-1909 | 26 | 91-9833 | 20, 40 |
| 55-9208 | 38 | 845-2834 | 20 | 91-9834 | 36 |
| 55-9211 | 36 | 91-3685 | 36 | 91-9912 | 6, 30 |
| 55-9217 | 8 | 91-5882 | 40 | 91-9913 | 24 |
| 55-9312 | 28 | 91-6988 | 18 | 91-9914 | 24 |
| 55-9313 | 28 | 91-7475 | 40 | 91-9915 | 24 |
| 55-9322 | 36 | 91-8097 | 36 | 92-2331 | 8 |
| 55-9323 | 36 | 91-8098 | 32 | 92-2332 | 8 |
| 55-9346 | 22 | 91-8100 | 34 | 92-239 | 20 |
| 55-9380 | 28 | 91-8102 | 34 | 92-259 | 40 |
| 55-9392 | 26 | 91-8103 | 34 | 92-2775 | 8 |
| 55-9444 | 20, 26 | 91-8104 | 34 | 92-2779 | 8 |
| 55-9541 | 10, 28, 34 | 91-8105 | 34 | 92-2995 | 28 |
| 55-9810 | 18 | 91-8106 | 34 | 92-411 | 34 |
| 60-285 | 10 | 91-8107 | 34, 40 | 92-440 | 34 |
| 61-443 | 10 | 91-8108 | 28 | 92-860 | 20 |
| 66-1916 | 12, 14 | 91-8134 | 28 | 98-5199 | 28 |
| 66-3015 | 14 | 91-8140 | 18 | 98-5335 | 36 |
| 66-3942 | 10, 14 | 91-8142 | 18 | 98-5454 | 22 |
| 66-6607 | 14 | 91-8154 | 40 | 98-5475 | 8 |
| 66-6610 | 14 | 91-8195 | 28 | 98-5523 | 36 |
| 66-7182 | 14 | 91-8199 | 28 | 98-5638 | 30 |
| 66-7183 | 14 | 91-8244 | 38 | 98-5768 | 8 |
| 66-7812 | 14 | 91-8252 | 34 | 98-5918 | 8 |
| 66-8054 | 14 | 91-8256 | 28 | 98-5919 | 8 |
| 66-9020 | 12 | 91-8258 | 36 | 98-5925 | 28 |
| 66-9024 | 10 | 91-8466 | 8 | 98-6213 | 8 |
| 66-9029 | 10 | 91-8467 | 18 | 98-6518 | 28 |
| 66-9030 | 10 | 91-8468 | 10 | 98-6657 | 8 |
| 66-9032 | 10, 16 | 91-8469 | 10 | 99-3281 | 38 |
| 66-9034 | 10 | 91-8663 | 34 | 99-4931 | 8 |
| 66-9035 | 10 | 91-8665 | 40 | | |
| 66-9036 | 12 | 91-8694 | 40 | | |

INDEX ALPHABETICAL BY DESCRIPTION

A

ADAPTER **14**
ADAPTER - high side **14**
ADAPTER - hose **34**
ADAPTER - push-on **26**

B

BANDWRAP **38**
BATTERY **20**
BEARING - opposite end **6, 8**
BEARING - shaft end **6, 8**
BEARING - slide **34**
BLOCK - coil **8**
BLOCK - terminal **20**
BOARD - relay **20**
BODY **14**
BOOT - circuit breaker **20**
BOOT - terminal **20**
BOX - control **18, 22**
BOX - Transfresh **36**
BRACKET **20**
BRACKET - air vent handle **34**
BRACKET - cable restraint **18**
BRACKET - diagram **20**
BRACKET - exchanger **10**
BRACKET - frame **28**
BRACKET - handle **34**
BRACKET - heater **18**
BRACKET - hose **38**
BRACKET - left **8**
BRACKET - motor **8**
BRACKET - right **8**
BREAKER - circuit **20, 24**

C

CABLE - battery **22, 26**
CABLE - compressor **18**
CABLE - connecting **26**
CABLE - plug **26**
CABLE - power **18**
CABLE - retriever **26**
CABLE - Transfresh **36**
CABLE & PLUG - retriever **20, 26**
CAP - dust **36**
CAP - fitting **14**
CAP - fuse **26**
CAP - plug **20**
CAP - retainer **32**
CAP - tube **8**
CAP - valve **14**
CHAIN **36**
CHANNEL - air **36**
CHANNEL - fresh air **36**
CHANNEL - Z **36**
CLAMP - exchanger **10**
CLAMP - hook **30**
CLAMP - hose **38**
CLAMP - sensor **16**
CLIP - retaining **20**

COIL **16**
COIL - condenser **10**
COIL - evaporator **8, 10**
COIL - liquid line valve **16**
COIL - valve **10, 12**
COMPRESSOR - scroll **10, 14, 18**
CONNECTOR - harness **22**
CONNECTOR - harness & sensor **8**
CONNECTOR - plug **22**
CONNECTOR - receptacle **36**
CONNECTOR - sensor **32**
CONNECTOR - T-hose **38**
CONTACTOR **24**
CONTROLLER **26**
CORE - valve **14**
COVER **30**
COVER - terminal box **14**
COVER - tube **8**

D

DEHYDRATOR **10**
DISK - air vent **34**
DOOR - control box **26**
DOOR - controller **20**
DOOR - evaporator **28**
DOOR - heater section **28**

F

FAN - condenser **6**
FAN - evaporator **8**
FITTING - harness **20**
FITTING - highside **14**
FITTING - lowside **14**
FLATWASHER **6, 8, 10, 14, 18, 28, 30, 34**
FRAME - condenser **30**
FUSE **20, 26**

G

GASKET **10**
GASKET - air vent **34**
GASKET - cover **22**
GASKET - door **30**
GASKET - evaporator door **30**
GASKET - power connector **14**
GASKET - retainer **32**
GASKET - unit **30, 36**
GASKET - valve **14**
GRILLE - condenser **28**
GRILLE - evaporator **36**
GRIP - cable **6**
GROMMET **6, 8, 22**

H

HANDLE - air vent **34**
HANGER - dehydrator **10**
HARNESS - condenser fan **6, 18**
HARNESS - control box **18**
HARNESS - evap fan **8**

HARNESS - evaporator fans & heaters
18
HARNESS - fan **8**
HARNESS - fan & heater **8**
HARNESS - sensor **16, 18**
HEAT EXCHANGER **10**
HEATER **18**
HINGE **28**
HINGE - air vent **34**
HINGE - cover **20**
HINGE - door **26**
HINGE - evap door **28**
HOLDER - fuse **20**
HOOK - strap **30**
HOSE - flex **38**
HOUSING - evaporator **8**

I

INLET - fresh air **36**
INSULATOR **20**
INSULATOR - hinge **26**
INSULATOR - latch **28**
INTERLOCK **24**

K

KEEPER - door latch **28**
KEYPAD **26**
KIT - gasket & grease **14**
KIT - power cord **14**
KIT - repair **16**
KNOB **28**

L

LABEL - high voltage **20**
LABEL - on/off **20**
LABEL - relay board **20**
LATCH - door **28**
LOCKNUT **6**
LOCKWASHER **6, 8, 14, 18, 20, 24, 34**

M

MODEM - RMM **26**
MOTOR - condenser fan **6, 18**
MOTOR - evaporator fan **18**
MOTOR - fan **8**
MOUNT - cable tie **38**

N

NAMEPLATE - Air Exchanger **40**
NAMEPLATE - arrow **8**
NAMEPLATE - Caution **40**
NAMEPLATE - Compressor **40**
NAMEPLATE - controller warning **26**
NAMEPLATE - Do Not Open Below 0 C
34
NAMEPLATE - Ingersoll Rand **40**
NAMEPLATE - Main Relay Board **40**
NAMEPLATE - phase select **26**

INDEX ALPHABETICAL BY DESCRIPTION

NAMEPLATE - Power Saver **40**
NAMEPLATE - R404A **40**
NAMEPLATE - Smart Reefer **40**
NAMEPLATE - Temperature Conversion **40**
NAMEPLATE - Thermo King **40**
NAMEPLATE - TK **28, 40**
NAMEPLATE - USDA Connections **36, 40**
NAMEPLATE - Warning **40**
NAMEPLATE - Warning, Fan Start **40**
NAMEPLATE - Warning, Hot Components **40**
NUT **6, 8, 10, 14, 18, 20, 24, 26, 28, 34**
NUT - captive **6, 30**
NUT - o-ring seal **12**
NUT - speed **20**
NUT - wing **34**

O

ORIFICE - condenser **30**
ORIFICE - condenser fan **6**
O-RING **14**

P

PANEL - USDA receptacle **36**
PIN - hinge **28, 34**
PLATE - air vent **34**
PLATE - bottom **24**
PLATE - cable storage **28**
PLATE - rear **36**
PLUG **14, 22, 36**
PLUG - dim **22**
PLUG - power **18**
PLUG - seal **20, 22**
POCKET - sensor **32**
PROTECTOR - edge **34**

R

RAIL - din **24**
RECEPTACLE **36**
RELAY - power **20**
RETAINER - probe **32**
RETAINER - screw **26**
RIVET - anchor **38**
RIVET - box **36**
RIVET - bracket **20**
RIVET - cap **36**
RIVET - channel **36**
RIVET - grille **36**
RIVET - hinge **28**
RIVET - inlet **36**
RIVET - latch **28**
RIVET - panel **36**
RIVET - plate **36**
RIVET - plug **20**
RIVET - receptacle **36**
RIVET - shroud **8**

S

SCREW **10, 24, 34**
SCREW - board **20**
SCREW - bracket **8, 10, 18, 20, 28, 38**
SCREW - cable **18**
SCREW - channel **36**
SCREW - clamp **16, 30**
SCREW - coil **8, 10**
SCREW - compressor **14**
SCREW - control box **18**
SCREW - cover **8, 30**
SCREW - door **26, 28**
SCREW - fan to hub **6**
SCREW - grille **28**
SCREW - ground **14**
SCREW - handle **34**
SCREW - hinge **20, 26, 28**
SCREW - keeper **28**
SCREW - motor **6, 8**
SCREW - orifice **6, 30**
SCREW - plate **28, 34**
SCREW - plate to box **24**
SCREW - receiver **10**
SCREW - relay board **20**
SCREW - strap **30**
SCREW - thermostat **18**
SCREW - transformer **24**
SCREW - valve **14**
SCREW - vent **34**
SEALER - polyurethane **36**
SEALER - silicone grease pack **14**
SENSOR - ambient **18**
SENSOR - compressor **18**
SENSOR - condenser **18**
SENSOR - defrost **18**
SENSOR - discharge **18**
SENSOR - head temperature **14**
SENSOR - humidity **16, 18**
SENSOR - return **18**
SHOULDER - o-ring seal **12**
SOLENOID - dehumidifier **18**
SPACER **14**
SPACER - clamp **16**
SPRING **28, 34**
SPRING - heater **18**
STRAP - door **30**
STRIP - sealing **6**
SWITCH - high temperature **18**
SWITCH - hpco **10, 14, 18**
SWITCH - lpco **12**
SWITCH - unit on/off **20**

T

TANK - receiver **10**
TEE **10**
TERMINAL - splice **6**
TERMINAL BLOCK **20**
THERMOSTAT **18**
TRANSFORMER **24**

TRAY - high voltage **20**
TRIM - edge guard **8**
TUBE **16**
TUBE - control valve **12**
TUBE - discharge **10**
TUBE - equalizer **12**
TUBE - exchanger to evaporator **12**
TUBE - exchanger to tee **10**
TUBE - exchanger to valve **12**
TUBE - expansion valve to tee **10**
TUBE - filter to drier **10**
TUBE - liquid **10**
TUBE - solenoid valve **12**
TUBE - tee to evaporator **10**
TUBE - tee to expansion valve **10**
TUBE - tee to solenoid **12**
TUBE - valve to compressor **12**
TUBE - valve to evaporator **10**

V

VALVE **14**
VALVE - discharge **10, 14**
VALVE - expansion **10**
VALVE - relief **10**
VALVE - solenoid **10, 12, 16, 18**
VALVE - stepper **12, 18**
VALVE - suction **12, 14**
VENT - air **34**

W

WASHER **10, 18, 20, 26, 28, 30, 34**
WASHER - dome **6, 30**
WASHER - ground **14**
WASHER - insulating **20**
WASHER - insulator **34**
WASHER - sealing **14**
WASHER - vibration damper **14**